

heart of the south west



# Heart of the South West Local Skills Report

2021 – 2024

---

# Contents

---

<b>1</b>	Foreword	02
<b>2</b>	Skills Advisory Panels - Introduction	06
<b>3</b>	Skills Strengths and Needs	10
<b>4</b>	Skills Strategy	18
<b>5</b>	Skills Action Plan	36
<b>6</b>	Assessment of SAP Progress	44
<b>7</b>	Case Studies	51
<b>8</b>	Looking Forward	59

The Heart of the South West Local Skills Report was published on 31 March 2021.

---

## Foreword

---

Education and skills shape a place. They provide the foundation for its economic personality, set the tone for its industrial and social mix, and contribute to its overall prosperity, providing the foundation for both growth and equity. We know that the most successful places and prosperous communities are underpinned by strong educational and skills performance; with those areas with the highest appetite for learning and the ability to harness such talent being those that most thrive.

The Heart of the South West is no different. Its economy is shaped and led by the skills of its residents and businesses. The skills of its workforce underpin its economic potential; whether through providing the essential technical skills which drive high value engineering and manufacturing; the insight and innovation that fuel our knowledge economy and the work of its universities; or providing the day-to-day leadership of small and micro businesses that form the backbone of every community. Supported by its strong schools, colleges and universities, as well as a network of dedicated private training providers and active employers, the area has real depth in its capacity to harness its skills and training capacity, and through doing so improved prosperity.





Despite the area's capacity to train, and its residents' appetite to learn, too many individuals still fail to reach their potential in the Heart of the South West. The statistics are clear. The level of those holding a higher-level qualification or working in a professional occupation within the Heart of South West remains below the national average; the number of those undertaking technical qualifications continues to trail the amazing opportunities on offer; and too many young people and adults facing disadvantage across the economy end their educational journey at GCSE level or below.

As an area, we understand that the failure to fully utilise the talent of our workforce has a price for our entire economy or all our communities; fewer individuals achieve a worthwhile job they value; reducing the ability of our businesses to grow and expand; and ultimately limiting the economic prosperity of all. The impact of Covid-19 over 2020 has only increased the challenge, with more young people and adults in need of additional support and opportunity than ever before.

Over the past 18 months, the Heart of the South West Skills Advisory Panel ('SAP') has brought partners together to address these shared challenges; working in unison to understand how we can improve skills outcomes for all, and champion shared approaches, projects and investments that will make a difference. As set out within Chapter 6 of this document, SAP and Local Enterprise Partnership ('LEP') working has already done much to progress skills uptake, promote aspiration and delivery opportunities over the past few years. Building on the strong partnership ethos already in place between business, skills providers and wider stakeholders within the Heart of the South West however, we believe that there is more progress that can now be made on this crucial agenda.

**This document therefore sets out the next step on that journey. It provides a shared skills blueprint for the area with a single vision at its heart, that every individual in the Heart of the South West should be able to access the skills they need to thrive in a productive job they value, supporting businesses, inclusion and growth.**



To achieve this ambition, this report commits partners to work together around three headline skills and training objectives within the Heart of the South West:

- **Ensuring that our skills and training environment is responsive and forward facing, meeting business and individual need;**
- **Ensuring that every individual can access the skills and training they need to achieve their own potential; and**
- **Ensuring that all skills and training investment and activity contributes to both improving our shared prosperity and collective productivity.**

Through achieving these three goals, partners will improve the capacity of our education and learning sector, businesses and individuals can grow and raise prosperity and create an environment in which skills and training opportunities are more accessed, more tailored to individual and business need, and lead to better outcomes for more people.

Words alone will not achieve these objectives. This report therefore includes a discrete action plan – our skills blueprint - to be taken forward over the next five years. This identifies named partners, addresses the various challenges identified through our shared evidence base, and take full advantage of new opportunities arising from our Local Industrial Strategy, the Government's emerging vision for Levelling Up, and wider support and initiatives to assist with our shared recovery from the recent pandemic.

As we have seen even more acutely over the past year, the Heart of the South West has significant opportunities to pursue, as well as a range of challenges yet to overcome. Through this document however, we can translate some of our shared endeavour around skills and employment into individual and shared success, driving forward our recovery in the short term, and setting a foundation for longer-term inclusive growth and prosperity for the Heart of the South West.

**Dr Fiona McMillan**  
**Chair, Skills Advisory Panel**



# Skills Blueprint

- Support skills demand in opportunity, high demand and more vulnerable sectors across the economy
- Support Innovation and enterprise through skills investment
- Promote high level and technical skills
- Secure funding to build capacity to support FE, HE and other technical skills capability
- Support Digital Skills Development

- Support investment that supports improved social mobility
- Support those seeking to re-enter employment through fast-track provision and bootcamps
- Refine and strengthen careers advice for young people and adults
- Support those with a barrier to learning or work to achieve and thrive, including those with a disability, older people and those facing disadvantage
- Provide support to young people to access high value, sustainable work through academic success, vocational learning and other pathways to work



- Develop a single gateway approach for skills and training information, which works better for both businesses and individuals
- Support linkages between FE and HE Provision, driving forward enhanced learning opportunities and new skills development

- Develop a single approach to labour market intelligence
- Champion business-led skills leadership through trailblazers and other opportunities
- Work with business to develop and deploy effective labour market intelligence

---

## Skills Advisory Panels

### Introduction

---

Skills Advisory Panels ('SAPs') bring together employers, skills providers and key local stakeholders to better understand and resolve skills mismatches at a local level. There are 36 SAPs across England as part of Local Enterprise Partnerships and Mayoral Combined Authorities.

The Department for Education (DfE) supports SAPs with grant funding primarily to produce high quality analysis of local labour markets and Local Skills Reports. The Reports set out the local strengths and skills needs and how the SAP proposes its area addresses its key priorities. The Reports aim to influence local partners and feed intelligence to central government, including the national-level Skills and Productivity Board (SPB).

In January 2021, DfE published its White Paper "Skills for Jobs: Lifelong Learning for Opportunity and Growth," which set out a number of reforms aimed at putting employers more firmly at the heart of the skills system. The White Paper outlined plans to test in 2021-22, in a small number of areas, "Local Skills Improvement Plans" created by business representative organisations.

The White Paper committed to build on the work of SAPs to date. SAPs and their Local Skills Reports will continue as the DfE trailblazes "Local Skill Improvement Plans" and until any potential changes are made to a SAP's remit and responsibilities.



The Heart of the South West Skills Advisory Panel is the strategic partnership for skills and employment within the Heart of the South West area (covering Somerset, Devon, Plymouth and Torbay). Its members include the Heart of the South West Local Enterprise Partnership ('HotSW LEP'), Local Employment and Skills Board, Colleges and University Partners, and wider public and private sector representatives and organisations.

The SAP partnership in the HotSW follows on from the previous LEP People Leadership Group, through which partners have worked closely together over the past five years to align and accelerate delivery. The period has seen a mixture of public, private and institutional investment that has sought to enhance local progression and reinforce the area's underlying labour market expertise and specialisation. Key developments have included:

- **South West Institute of Technology ('IoT')** Successfully secured in 2019, the South West IoT brings together further and higher education partners with regionally and national significant private sector partners to advance technical skills delivery and development across the economy. With a focus upon advanced engineering and digital competencies, the IoT offers local partners and businesses a unique opportunity to fast track the development and growth of core technical competencies in our opportunity sectors.
- **Sector Skills Investment** Over the past five years, further and higher education partners across the HotSW have invested over £250m into specialist capacity and facilities to advance learning and expertise within our core sectors. These include:
  - New engineering, digital and technology centres in Exeter, Bridgwater, Torbay and Plymouth;
  - National Centres of excellence around Nuclear, Marine and other advanced manufacturing, construction and engineering approaches;
  - Investment into higher education facilities in Exeter, Plymouth and Taunton;
  - New investment in space for additional innovation and enterprise across the wider HotSW.





- o **HotSW Careers Hub** Emerging from the work of the Careers Enterprise Company and Gatsby Foundation, the HotSW Career Hub as of September had grown to cover every mainstream secondary school in the area, providing support for high quality careers, advice and guidance and business/education engagement to every student. The largest hub in the UK, the HotSW Careers Hub has developed nationally competitive expertise in supporting work experience and engagement with business.
- o **Digital Skills Partnership** One of two original pilots agreed with DCMS in 2018, the HotSW Digital Skills Partnership brings together partners from across the public and private sector with a focus on digital skills development and capacity. Securing over £3.5m of funding in its lifetime towards local delivery to date, and facilitating wider success across careers advice, business support and infrastructure opportunities. The DSP has taken a strong leadership role in promoting digital pathways and the uptake of digital skills from basic to higher level.
- o **Delivery of the European Social Fund** HotSW partners have been successful over the past 4 years in committing over £44m of ESF funding across a range of high value / high need projects. These include joint working with key national partners such as the Education and Skills Funding Agency ('ESFA') and Big Lottery, universities and colleges, and wider community and voluntary organisations. As of 2020, the HotSW programme had supported over 20,000 individuals to access an apprenticeship, develop their in-work skills, return to work and training and progress more generally.
- o **National Retraining Scheme / Skills Fund Pilot Activity** Working closely with the Department of Education ('DfE') since 2017 on the emerging development of the National Retraining Fund and subsequent policy, HotSW partners have contributed towards the delivery of 1,500 adult training places in the past three years as part of wider testing and roll out of the Government's update skills approach. This includes testing of forerunner approaches to the lifetime guarantee offer at Level 3, and most recently bootcamp approaches for core sectors.



In October 2020, Government placed a formal condition on each of England's 37 Skills Advisory Panel as part of this 2020/21 funding to produce a Local Skills Report for their respective area by 31 March 2021. Providing a five-year blueprint for shared priorities across the skills landscape, the report is required to both align skills investment and activity with its respective area and provide a foundation for future growth and inclusion through maximising the impact of the skills provision.

Specifically, the report is required to play the following five roles:

- o **Clearly setting out key skills needs** ensuring local skills needs are visible to local partners who can then engage with them.
- o **Feeding intelligence to the national Shared Prosperity Board ('SPB') and central government** providing a consistent output of intelligence common to all SAPs that the SPB can use to understand the needs and priorities of local areas and build a national picture of the supply and demand for skills.
- o **Being a 'go-to' document for everything local-skills related** bringing together existing and new skills information into a consistent format common to all SAPs.
- o **Offering valuable insight and evaluation** detailing the progress made on current local skills initiatives and outlining future skills plans to plug key skills gaps.
- o **Acting as an engagement tool** a vehicle through which SAPs can directly engage, influence and rally employers and providers in their areas to support the local skills agenda.

This document is the Heart of the South West first Local Skills Report.

---

## Skills Strengths and Needs

---

This chapter briefly summarizes the evidence base set out in Annex A and B of this document. This can be found in full at [skillslaunchpad.org.uk/skills-strategy/](https://skillslaunchpad.org.uk/skills-strategy/)

### Overview

Located in the peninsula of the South West of England, the Heart of the South West is one of the country's largest LEP areas. Its economy is broadly balanced, and while many of its industrial strengths capitalise on its rich endowment of environmental assets, it has high-tech specialisms in aerospace, photonics and ship building. Strategies in place to benefit from the golden opportunities afforded by marine, nuclear, aerospace and advanced engineering, data analytics, health and care and rural productivity. Its economic strategy envisions doubling the size of the economy but with an emphasis on clean and inclusive growth.

In order to meet this challenge, the HotSW will need to unlock the region's productive potential over the next decade, whilst creating quality employment opportunities for its residents in the broader context of Covid-19 recovery and recalibration of the UK's trading relationship with the European Union. Skills will be integral to realising these ambitions. Covid-19 has had a disproportionate impact on parts of the area, due to the HotSW's heavy reliance on tourism, hospitality, and retail activity. Productivity is also traditionally low by national standards due to a combination of factors relating not only to skills, but business structure and innovation. Recovery and growth will therefore involve maximising the economies of industrial clusters and improving leadership and management skills so that local businesses and organisations are more efficient, fully utilising the capabilities of all staff, and adopting the latest technologies and management practices.



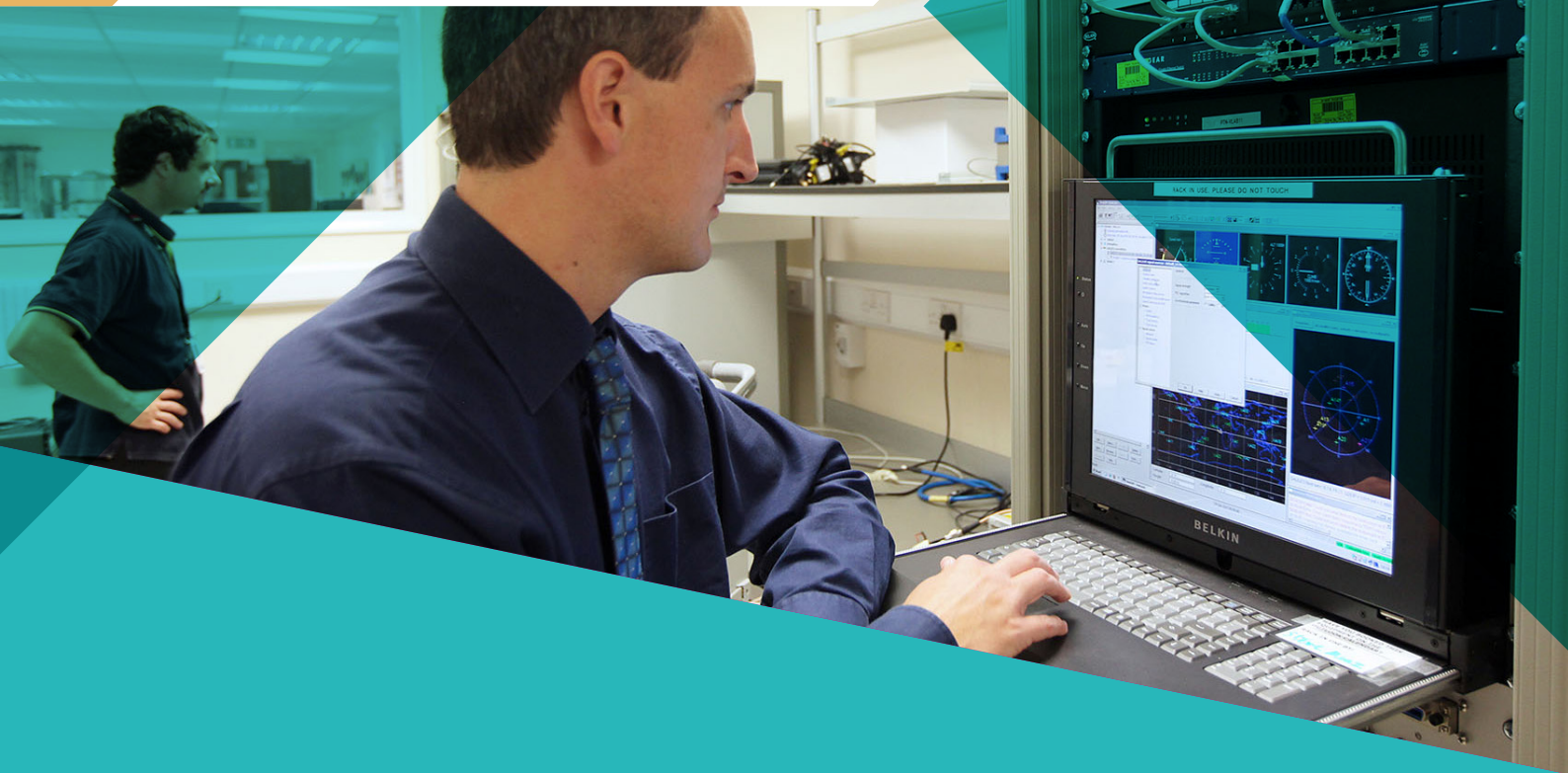


## Key Economic Features

- o A mixed geography** The Heart of the South West is one of England's most geographically diverse LEP areas, encompassing significant rural and coastal areas, alongside core urban centres.
- o Low productivity overall, but significant economic diversity across the HotSW's geography** In 2018, GVA per head in the HotSW was approximately 18% lower than the national average. This however disguises substantial differences within the area, with wages and productivity per head in Exeter roughly the same as the national average in 2019, whilst wages in Torridge were approximately 20% lower than those in Exeter.
- o A small business / self-employed economy** As a predominantly rural area, 98% of the Heart of the South West's Businesses were either small or micro organisation in 2020, with only 1 in 5 businesses in the HotSW having a turnover above £50,000 per annum. Similarly, roughly 18% of the population in the HotSW were self-employed in 2020.
- o A shrinking working age population** The HotSW's working age population is currently ageing around a third faster than the rest of the UK, with around one third of the Heart of the South West's overall population already over the age of 65 in 2019, compared to just 6% of the population between the age of 16-19.



- **Significant clusters of localised deprivation are often disguised by proximity to more prosperous communities** The HotSW had above average numbers of wards within the bottom 20% nationally in 2019, notably concentrated within Plymouth, Torbay, Northern Devon, Exeter and Western Somerset, as well as across wider rural and coastal locations.
- **High overall levels of economic activity and those of working age in employment, but low levels of average pay, higher proportions of individuals working within lower value sectors, and a lower proportion of the working age population overall undertaking a higher-level role** Historically, the Heart of the South West has benefited from above average economic activity rates, with the average only falling below 77% once in past 25 years before the onset of Covid-19. However, gross weekly pay for full time workers in 2019 was roughly 11% lower than the English average.
- **A mixture of skills and education capacity** The Heart of the South West is home to 4 universities, 11 Colleges, 160 mainstream secondaries, and over 300 independent training providers. It is also home to a range of specialist provision, including its Institutes of Technology, the National College for Nuclear and additional research capacity, and facilities covering specialist skill development within the agricultural, marine, engineering, digital, construction and environmental science sectors.
- **Difference in physical, financial and virtual access to learning** Whilst the Heart of the South West benefits from reasonable achievement levels overall, access to learning continues to be influenced across the area by a range of tangible and intangible barriers. Mixed transport and public transport access to Centres of learning; significant differences in broadband and digital capacity and infrastructure availability; and challenges around the affordability of learning itself for those from a more disadvantaged background continue to be important differentials in relative performance across the HotSW.



## Skills Demand

Skills demand within the HotSW has been relatively consistent over the past five years. Top sectors have included manufacturing and engineering related occupations, health, construction, logistics, professional and financial services roles, and hospitality, leisure and retail opportunities. In the past three years, health and social care, hospitality and leisure, and engineering / advanced manufacturing have been areas of enhanced pressure, reflecting patterns in demographic change, local sector growth and changing economic patterns and habits.

Summarising the current broad trends across the HotSW economy, demand can be broadly pooled into three areas;

- o Sectors with an ongoing and cyclical recruitment and skills need**  
 These include the skilled trades, care sector, leisure sector and across the generic service sector.
- o Sectors with ongoing occupation specific demand, but who generally don't have a wider challenge around recruitment** These are most commonly found within elementary occupations (skilled trades), sales and customer services (finance, managerial posts), associate professionals (project management, finance) and hotels and restaurants (chefs, management).
- o Localised gaps within specialist occupations** These include demand within professional occupations, transport and storage, information and communications, construction, manufacture and production, and specialist health and social work roles within the HotSW.





Focusing upon sectoral demand, it is currently anticipated that the following core sectors will remain areas of specific heightened need / demand into the medium term:

- **Health and social work** are currently predicted to create more 'new' jobs than any other sector locally over the next 10 years particularly among caring personal service occupations but also health professionals. The existence of skills shortages and gaps within the sector now, suggest that encouraging more adults and young people to follow careers in health and care should be a priority.
- **Professional and support services and information technology** are predicted to be key source of job growth locally over the next 10 years underpinning demand for a range of mainly high-skilled occupations particularly in the former. Within this, Nesta (The UK's innovation agency for social good) predicts strong demand for skills groups related to data engineering, IT security operations, market research and app / web development.
- **Accommodation and food and arts and entertainment**, along with other services and wholesale and retail trade were also predicted to create new opportunities over the next 10 years. The extent to which these opportunities will be realised will depend on how quickly these sectors recover from the pandemic and the extent to which consumer preferences and business models within these sectors evolve as a consequence.
- **Construction**, a sector that currently has the second highest redundancy rate in nationally predicted to increase employment locally. Most of the increase is anticipated to be at professional and associate professional and managerial level, although demand for construction trades will also increase. The fortunes of the construction sector tend to track those of the wider economy, these jobs will depend on the impacts from exiting the EU and the broader recovery.
- **Production, manufacturing and Science, Technology, Engineering and Math (STEM) based employment** is currently expected to be expected to be an area of significant replacement demand, though overall job numbers are expected to fall. For example, the total requirement for science, research, engineering and technology professionals and associate professionals is expected to increase by 19,000 and the requirement for skilled trades by 10,000 over the 10-year period covered by the projections, despite small reduction in overall job numbers.



With regards wider demand factors, the past year has seen a significant shift in demand patterns across the HotSW as a result of Covid-19. Whilst it is still too early to fully describe the long-term labour market impacts of the pandemic, and the consequences for local labour demand, economic forecasts are currently pessimistic around employment growth nationally this year or next, with consequences for both local demand, and particularly for young people.

In the short-term, skills demand in the HotSW will depend on how lockdowns and any subsequent restrictions affect commercial activities and ultimately business survival. Redundancy rates and take-up of Government job retention support suggests that the pandemic is disproportionately affecting demand for customer-facing sectors such as arts, entertainment and recreation and accommodation and food services but also construction and manufacturing. Demand for occupations related to health and care, and the skills implicit within these, appears strong. It is also currently predicted that employers will identify a deficiency or need to improve general and industry specific digital skills across the workforce as a result of recent events. The pandemic is likely to have further increased the need for digital competencies and enhanced leadership and management skills.

Longer-term, it is anticipated that skills demand will continue to be shaped by mega trends such as technological change, globalisation, climate change

and demographic change with the pace of these changes potentially accelerated due to the Covid-19 pandemic: for example, increased remote-working and online shopping. It is perhaps too early to call whether changes in consumer preferences and work design will persist over the longer-term, however, the broad direction of travel is unlikely to change. Employment projections for the Heart of the South West predicts that while there will be a net requirement for workers with qualifications at all levels from Level 2 upwards, expansion demand is concentrated solely among occupations requiring for higher education qualifications and particularly first degrees.

In addition, it is anticipated that new roles will be created by a mixture of other trends and opportunities including:

- **Ongoing technological advances**, notably around clean growth and automation.
- **Existing businesses** seeking to integrate non-traditional sector roles (including data engineering, IT Security, market research and app/web development) into their activity.
- **New opportunities created through enterprise and self-employment**, with entrepreneurial behaviour traditionally increasing after large scale economic shocks as individuals seek to adjust and find new options.



## Skills Supply

The HotSW's education system overall is effective in ensuring that the majority of young people attain a Level 2 qualification by the age of 19. In 2019, GCSE and A Level achievement for those aged 16-19 levels in the HotSW was roughly equivalent to the national average (though with significant local difference), with the area benefitting from a Level 3 achievement level for non-A level qualifications roughly twice that of the national average. Level 4 and above achievement (amongst adults) was also roughly equivalent to national averages. Notably, the Heart of the South West also had some of the Country's highest levels of apprenticeship activity and achievement (notably around Plymouth and Exeter).

However, attainment at Level 2 by age 19 has fallen in each of the last four years within the area, with evidence suggesting that disadvantaged pupils and those with a barrier to learning are considerably less likely to achieve educationally than their peers. National studies suggest that many of those that do not achieve by age 19, do achieve Level 2 or 3 by age 25, with qualitative feedback from providers and employers suggesting this is also the case in the local area. These 'second', or even 'third' chance opportunities are crucial within the HotSW for individuals who did not achieve formal qualifications at school or college.

Those that remain in education in the HotSW tend to achieve well and acquire qualifications in subjects valued by employers – as evidenced by better-than-average employment rates. Rudimentary assessment of labour market fit suggests that there is an opportunity, to encourage more learners to access courses at all levels, in particular focusing on subjects allied to information and communication; business administration and law; health, public services and care (including teaching); and engineering and manufacturing technologies. This needs to be underpinned by access to good quality careers information, advice, and guidance.

Progression into higher education in the HotSW though remains low when compared to peer areas, with graduate retention remaining a specific challenge as it is for many areas outside London and the South East. The ongoing development of industrial clusters seeks to support this issue, enticing experienced workers into the area with the possibility of opportunities beyond the 'destination job'. While salaries are lower than the England average, the Heart of the South West performs well on various quality of life metrics including house prices (though these can vary considerably) and environmental quality, which also seeks to reinforce local appeal. However, rates of progress here remain slow.



## Matching supply and demand

There is some evidence of a mismatch between skills supply and demand within the HotSW. In 2019 for example, 25% of those completing a Level 3 qualification locally were in professional services, finance and business disciplines, whilst a further 19% were in service enterprise activity (which includes beauty and personal care, customer service and other small business centric qualifications) or sports and leisure qualifications. This is despite these sectors making up just 13% and 1% of the economy respectively. Alternatively, only 1% of qualifications were within logistics and retail qualifications (16% of employment), and 13% in health and social care (approximately 20% of employment and current vacancies).

As such, the Chartered institute of Personal Development '(CIPD)' recently described the Heart of the South West as being in "skills surplus": A situation of high supply overall, but against a low demand for skills. Deeper analysis of the area suggests that the picture is rather more complex than this simplistic summary suggests, with the need for a nuanced understanding of local skills demand and labour markets across the LEP's varied economy geography. In general, the area could perhaps be better described as below:

- High supply and high demand for skills in the Exeter Travel to Work area (i.e. "High-skills equilibrium")
- Lower supply and lower demand for skills across Somerset, Plymouth, and Torbay (i.e. "Low skills equilibrium"); and
- High supply, but lower demand across parts of Devon (i.e. "Skills surplus").

Ensuring that this mismatch between supply and demand is addressed, as well as ensuring that provision in growth sector and low supply, high demand areas is prioritised forms a central theme of the rest of this report.

## Skills Strategy



### Overview

Skills performance is a crucial element of any areas' economic performance, determining its productivity, shaping local wellbeing, and underpinning its industrial and knowledge economy. As set out in Chapter 3, the Heart of the South West is no different, facing a range of social and economic opportunities and challenges over the next decade which require skills solutions if the area is to both achieve additional growth and address individual disparity. Bridging the gap between skills supply and demand will also need to be addressed if the area is to progress.

This core strategy seeks to provide that shared blueprint for the Heart of the South West. At its core is a shared vision that:

**Every individual in the Heart of the South West should be able to access the skills they need to thrive in a productive job they value, supporting businesses, inclusion and growth.**

This vision seeks to put the individual and their progression at the heart of our skills activity, ensuring positive life chances are extended to all. Through supporting and shaping individual advancement, we will provide our businesses with the skills they need to drive a more productive and inclusive economy. Through securing more skilled people, we will enable the area to better address the challenges and take up the opportunities it faces, supporting the economy and our communities to recover from the recent shocks associated with Covid-19, and providing a foundation for future prosperity.

To achieve this vision, the Heart of the South West will focus on three core objectives moving forward, which will drive and accelerate progress around skills delivery and performance. These are:

- **Ensure that our skills and training environment is responsive and forward facing, meeting business and individual need.**

Working with our work based learning providers, whether colleges, independent providers and their networks, schools, universities, or other specialist provision (notably our IoTs. national centers of excellence and providers of community and enterprise education) to ensure that our delivery environment and provision is fit for purpose and able to support both existing business needs and future economic

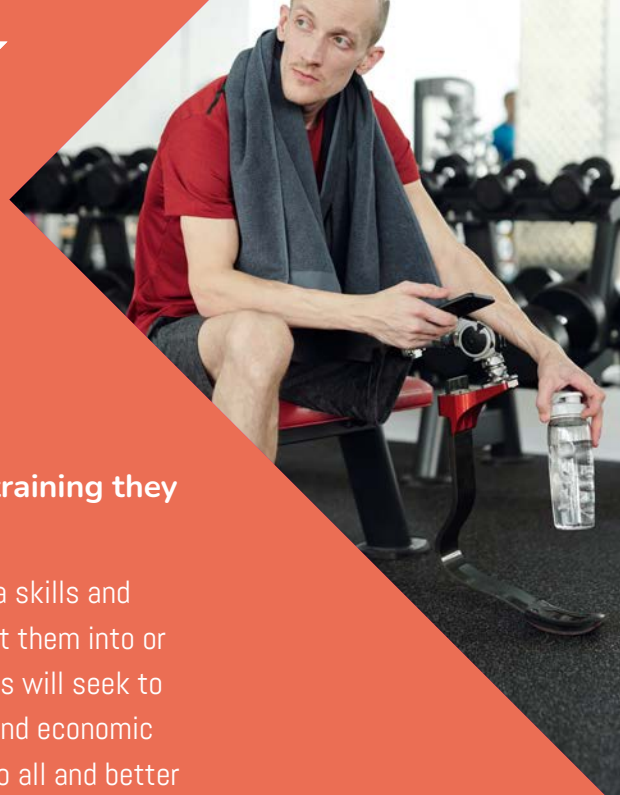
opportunities (notably within key sectors such as advanced engineering and production, clean growth, digital and creative industries, modern construction and health).

This in turn will seek to address ongoing challenges around individual achievement and business skills uptake, and mismatches between business demand and skills supply.

Activity will include joint working and projects to ensure that provision is shaped to fit with and drive forward local economic demand / opportunities; is responsive and flexible to both individual and business requirements; is able to support those furthest from the market; and provides a seamless and integrated training offer / escalator approach. To achieve this, partners will seek to best utilise and integrate new capital and revenue support to meet emerging economic opportunities and reinforce existing complimentary capacity, as well as seek to work together to ensure that recovery activity supports those with the greatest barriers to progression.

As part of the development of this approach, engagement with business and economic partners will also be crucial, ensuring that demand for roles is stimulated within key sectors; that workforce provision is business led and co-designed; that essential apprenticeships (at both tertiary and higher level) and other vocational pathways are consistently promoted; and the value of higher and technical skills to business performance demonstrated and championed. This will require joint working to ensure that demand led activity is fully funded (including resources for key business / provider partnerships) as part of the Heart of the South West's overall skills approach.





o **Ensure that every individual can access the skills and training they need to achieve their own potential.**

Working together to ensure that the Heart of the South West has a skills and training offer that can meet the needs of any individual and support them into or progress through a job which adds value to the wider economy. This will seek to address both the area's challenges around individual productivity and economic performance; support wider efforts around extending opportunity to all and better enabling access regardless of individual barriers; and expand and enhance our shared labour market for higher, technical and high demand skilled.

Actions will include:

- o Working together to better support those with barrier to learning or work, developing a shared approach to improving social inclusion and mobility. This will include facilitating new community learning capacity and offers in our most deprived communities; enhancing outreach to our most vulnerable and hardest to reach individuals and young people; and seeking to improve wraparound support for those with a barrier to progression.
- o Providing enhanced careers advice guidance for young people and adults, particularly those with at risk of NEET or economic exclusion;
- o Improving training availability for those in and outside of work who may be able to upskill, but face another barrier to progression;
- o Making full use of new training and learning offers like the Lifetime Guarantee;
- o Securing additional support for those who are long term unemployed; and
- o Engaging and drawing upon other government led skills and work provision that can enable us to harness individual progression, including support for self-employment and enterprise activity which benefits the individual, and ensuring every individual has the digital skills they require to thrive.

This will require close working with businesses, to promote the opportunities involved in expanding and extending recruitment patterns; capture and fully market their career pathways and new opportunities to those in education and across the existing workforce; and increase demand for higher level skills, technical roles and staff able to lead and enable innovative growth and services.



**o Ensure that all skills and training investment and activity contributes to both improving our shared prosperity and collective productivity.**

Working together, public, private and skills provider / educational partners will seek to ensure that skills activity and funding is designed to best meet the needs of both the economy and drive social inclusion / shared prosperity. This will seek to address challenges around deprivation and economic exclusion, as well as improve overall supply responsiveness and economic fit of provision.

This will include joint working around labour market intelligence, economic monitoring and other data to ensure that there is a shared understanding of needs and opportunities; integration of social inclusion objectives in shared investment approaches, focusing on extending opportunities to all; working together to optimise the skills and employment impact of key public and private sector investments, such as new construction opportunities or national significant infrastructure projects; seeking to eliminate barriers to learning such as around digital exclusion, financial exclusion and challenges around transport access; and seeking to find new solutions and approaches to working in the hardest to reach communities and those facing the most disadvantage.

In taking forward the above, partners will ensure that the skills landscape will both champion economic and social inclusion across the area, as well as support our wider ambitions around sector growth, economic development and productivity improvement.



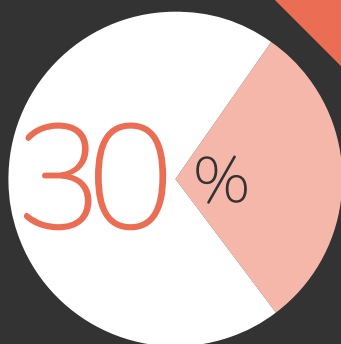
## Productivity and Sectors

The Heart of the South West Local Industrial Strategy ('LIS') sets out our shared ambition to transform the local economy through clean and inclusive growth. The strategy seeks to develop a new approach to growth across the area, seeking to decouple economic growth from emission growth, and more widely share the proceeds across people and communities.

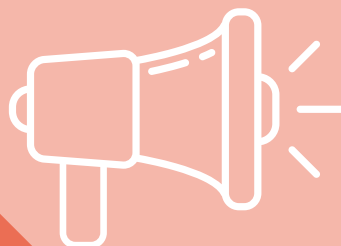
As part of this ambition, the LIS identifies 3 areas of significant growth opportunity that it wishes to prioritise over the next two decades, **Engineering Futures; Digital Futures;** and **Energy Futures**. Partners believe that these priority sectors have a key role to play in both contributing to Government's long-term ambitions for national growth, whilst driving forward social inclusion and levelling up across the HotSW's mixed economy, as well as support wider clean growth.

This Strategy recognises the potential of these three core sectors in driving forward clean growth and inclusion in the HotSW. Whilst every skills and training offer must deliver the transferable skills required to support an individual to thrive in the modern workforce, ensuring that our sectors are provided with the specialist staff they need to drive forward prosperity must be a shared local focus. This will be achieved in the first instance through a focus upon promoting and prioritising their development through our skills investment, creating clear pathways / escalators of progression into and through these three core opportunities areas, providing a 'no wrong door' approach to related careers. This will ensure that, regardless of background or prior achievement, a route to a high-quality job in a clean growth sector will be available.

## Science, Technology, Engineering and Maths in the Heart of the South west



Of the area's  
economic output



12,000

STEM roles advertised

£10billion  
worth to the economy



197,032

employed in STEM



£29,712 average salary

Figures are from 2018 and can be found in our evidence base online at [www.skillsaunchpad.org.uk](http://www.skillsaunchpad.org.uk)





More specifically, we will:

- o **Engineering Futures.** Seek to build upon the expertise of our universities, colleges and specialist education and training providers to create and support pathways into evolving engineering disciplines, with tailoring around marine, aerospace, photonics, nuclear, civil construction, medtech and defence careers. These in turn will serve wider clean growth ambitions, as well as wider productivity goals.

This will include increased support for specialisation within our training landscape; improved linkages between business and training providers to improve the relevance of qualification design and delivery; enhanced opportunities for innovation and higher-level skills development; and a focus on the development and increased delivery of individuals with technical level skills for related sectors. Critical to these outcomes will also be a consistent approach to related careers advice and guidance for young people and adults; maximising the impact of our Institutes of Technology and Centers of Excellence / National College; and better aligning the flow of individuals between secondary education, further education and higher education opportunities.



- o **Digital Futures.** Recognising the area's existing strength in training and higher-level skills within data analytics, cyber security and environmental data technologies, seek to create an area wide approach to digital career progression and development. This will include a focus on ensuring every individual has the basic digital competencies required to achieve in a modern role, but also that businesses are able to thrive in a digital environment.

Activity will therefore encompass working with schools and other educational settings to promote digital careers and opportunities throughout the HotSW; working with our Colleges and wider training providers to offer a graduated approach to digital training and progression, from basic skills for adults to technical competencies up to Level 5-6; engagement and co-design with employers, universities, colleges and our two Institutes of Technology of relevant qualifications and competences; and development of specialist training and innovation capacity within our Colleges and universities around higher level skills and teaching / management capacity.

In bringing forward this opportunity, the HotSW will seek to draw upon and work intensively with its Digital Skills Partnership, providing a leadership and coordination role amongst partners. Through the integration and enablement of individual and business level digital skills, the area will also drive forward more sustainable work patterns, cleaner outcomes and prepare itself for future changes across the world of work.





- **Energy Futures / Low Carbon Growth.** Seeking to build upon the area's unique strength around nuclear technology and engineering, but also specialisms in green energy, marine energy, photovoltaic, wind, nuclear fission and decommissioning expertise, and clean mobility technologies, providing clear progression and entry routes into related career paths. Through growing our potential in this sector, and creating a world class workforce, we will directly contribute to UK carbon reduction and wider sustainability ambitions, as well as drive individual life chances.

This will include accelerating existing careers and information pathways within schools around nuclear and energy / green related careers; reinforcing training and qualification approaches into clean growth based careers, reinforcing specialist training and curriculum delivery in colleges and through the area's IoT and National College capacity; supporting local leadership and upskilling to access supply chain and other opportunities within the sector; and promoting and supporting innovation by both the business community and our FE and HE institutions and specialist training providers.



This emphasis on opportunities and clean recovery is also critical in light of the impact of the recent pandemic. With significant disruption across the labour market and economy, as highlighted elsewhere, ensuring that opportunities for renewal are maximised will be key to the HotSW approach towards building back better. As identified through both local and LEP level recovery plans, opportunities sectors provide one key route for achieving this ambition.

In addition to these growth opportunities, the area has a range of broader sectors which are crucial to its economy and require a discrete focus. As both drivers of local economic output and major contributors to local and regional economic, these sectors have a key role to play in driving forward the area's wider economy, but also providing valuable high-skilled jobs for the future which benefit individuals, communities and wider clean growth. In light of Covid-19, these sectors have also taken on a new priority, either as core contributors to our shared recovery, or in need of substantial additional support due to the distortive impact of the pandemic. We will:

- **Health and Social Care.** Seek to work with the health and social care sector to provide new opportunities to enter the sector, promoting the sector as both a valuable career pathway and hub for innovation and productivity enhancement. Support individuals to progress into higher level health or specialist occupations; work to create a culture of learning and recognition of training across all levels; seeking to reinforce innovation approaches through learning; and link together employer, education providers (including further education, higher education and training providers) and community / employment approaches and needs. In doing so, support Government's wider ambitions around integrated healthcare.
- **Construction.** Work with the construction sector to both identify key areas of need and opportunity for the future, including working together around replacing an aging workforce; develop new pathways into apprenticeship and other routes into the trades; promote upskilling for existing construction operatives; and develop capacity for higher value construction training. This will include creating and supporting training to facilitate new methods of construction and sustainable construction. This will also include working together to maximise the opportunities arising from wider developments, such as the need to retrofit our housing stock and develop civils and infrastructure engineering capacity linked to highways, utilities and broadband. Activity will seek to build upon lessons learnt through projects like Building Plymouth and Building Greater Exeter, as well as best practice developed through civils programmes around Hinkley Point.

### o **Agritech and Food and Drink Production.**

Seeking to build on the Heart of the South West's internationally recognised agricultural / food and drink industries, we will work with the sector to identify formal training pathways and upskilling across the sector, looking to add value to existing roles, support the sectors modernisation and ongoing diversification, and improve local competitiveness. This may include increased investment in robotics, digital technologies and other aligned skills sets which support investment and growth, as well as around land management and other science-based approaches. Projects such as the proposed food hub also offer opportunities to align approaches in pilot environments.

### o **Tourism, Hospitality, Retail and Leisure.**

Recognising challenges posed during the recent Covid-19 crisis, but also the importance of these core sectors to our shared economy, work with relevant businesses and sector organizations to accelerate the upskilling and value of our tourism, retail and hospitality / leisure offer, through upskilling of staff, reinforced leadership and management skills and wider customer service and digital capacity across the sector. This will include support for skills within new higher value tourism sub-sectors, including green and sustainable tourism approaches. In addition, seek to maximise the impact of new initiatives and wider business support approaches, such as the South West Tourism Zone, High Street Funds and other regeneration resources to use skills training and skills capacity to support sector development and renewal.

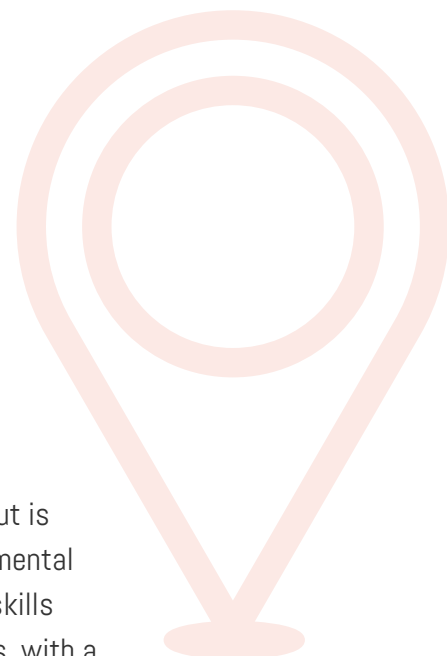
o **Creative Industries.** Whilst often aligned with the digital sector, the creative industries play an important additional role across the Heart of the South West, both as part of a external offer to the rest of the UK, and underpinning our visitor and cultural offer. This ranges from film, to publishing, to performance, to design and architecture, all areas of local specialism and distinctiveness. The area will therefore seek to work with the sector to prioritise areas of skills growth, notably around design and creative media, seeking to harness the capacity of our universities and colleges around aligned, high productivity creative roles to encourage local business development, enterprise and innovation.





As part of our sector skills approach, it will also be critical to ensure that there is a firm link between research and development / innovation activity and wider skills and labour market development. In many cases, skills development and knowledge transfer underpins individual business innovation activity, and wider sector performance. This is particularly critical within our higher value opportunities, including within aerospace, defence, nuclear, marine,

wider advancing engineering, health, clean industries and digital sector development. Our higher education institutions, IoTs, Colleges and other research and training bodies will have a core role to play in this integration. However, it will also be important to ensure that a culture of innovation and enterprise is integrated throughout our approach, including working with schools and young students to promote positive behaviours and aspiration.



## Geography

The Heart of the South West does not comprise a single economic geography, but is instead made up of multiple labour markets, with a mixture of sectoral, environmental and social strengths and weaknesses, opportunities and threats. As such, any skills approach to the Heart of the South West must recognise these local differences, with a clear understanding of the differing skills, learning needs and requirements of each of our shared communities.

Building on our 3 headline priorities for the Heart of the South West, we will therefore also seek to achieve the following over the next five years in each of the Heart of the South West's 6 Skills and Employment geographies:

- o **Plymouth and its travel to work area.** Recognising the manufacturing strength and opportunities associated with our Ocean City, we will build upon Plymouth's nationally significant capacity in marine technologies and wider advanced engineering, manufacturing and defence excellence. Aligned to this, we take forward the city's ambitious plans for recovery and growth, and to address social inclusion, focusing on maximising the impact of engagement with schools, locally led employment and training activity through the City College Plymouth and the Devon and Cornwall Training Provider Network ('DCTPN'), higher level learning and innovation activity through the City's universities, and supporting wider opportunities in areas such as cyber/digital development, health and social care, and construction.
- o **Exeter and its travel to work area.** As the heart of the area's knowledge economy, and quickest growing locality, we will seek to maximise the productivity and levelling up potential of Exeter and its wider travel to work area covering East Devon, Mid Devon and Teignbridge. A focus will be placed on the potential of the city as a hub for digital technologies, green growth, advanced manufacturing, and professional / financial services. In addition, partners will seek to maximise the impact of the City's outstanding College and broader FE institutions, research university, and capacity of DCTPN's membership to drive ongoing efforts around aligning education and work opportunities; employability and upskilling activity around construction and health; and seek to build digital capacity from basic skills to advanced technical competencies.

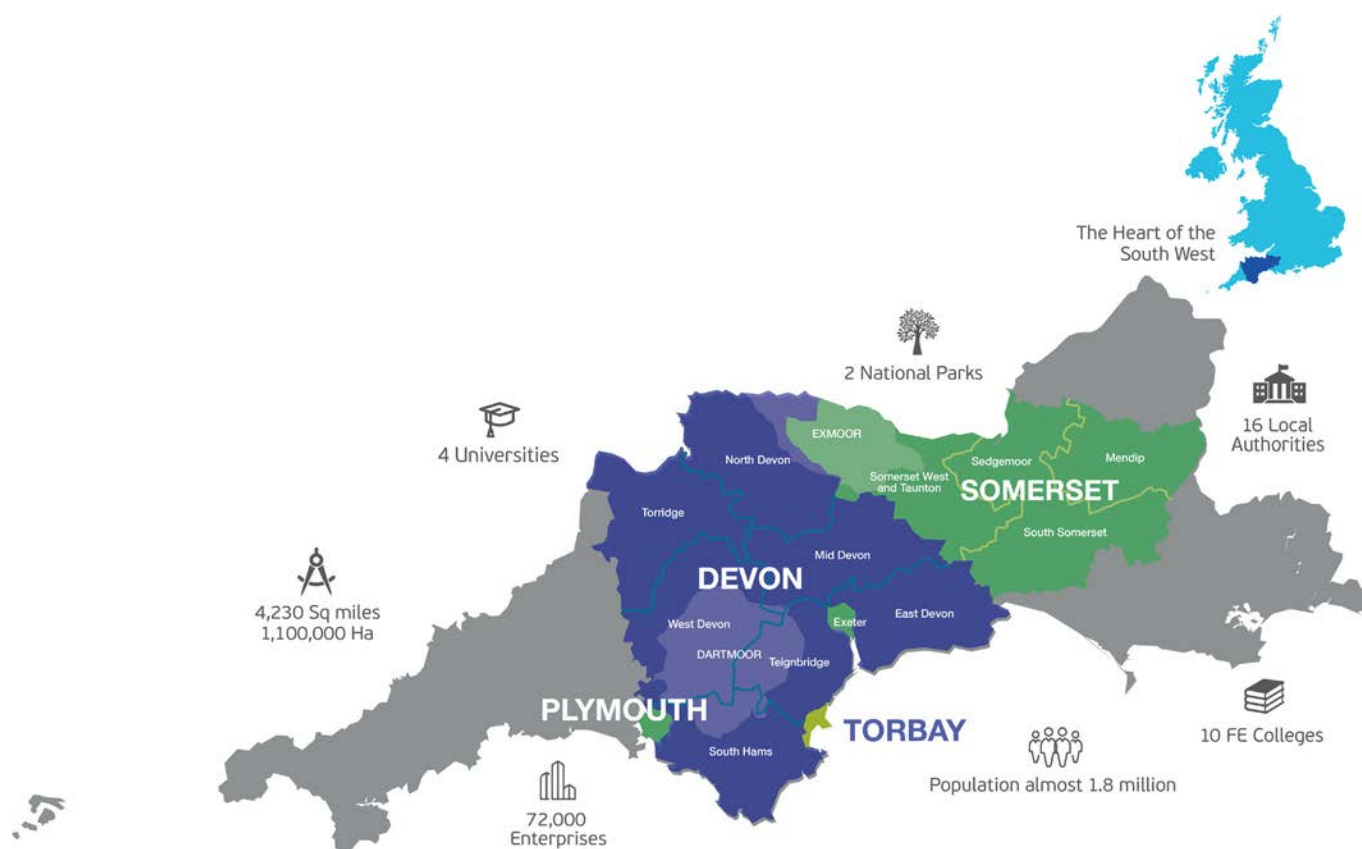


- o **Northern and Western Devon.** Recognising the diversity of the economy and employment within Northern and Western Devon, we will focus on extending opportunities to every rural, coastal and market town location. Building on existing opportunities within advanced manufacturing and engineering (notably within marine technologies), pharmaceuticals, agritech, and tourism and health, we will seek to enhance the capacity of PETROC and wider DCTPN members to support local upskilling and attainment; engage and accelerate local efforts around educational aspiration and economic inclusion; improve local employability and earning potential; and seek to work with the area's majority small business community to harness local growth opportunities. Improved transport and wider infrastructure linkages may also play an important role in driving upskilling, supporting community prosperity and improving business productivity.
- o **Taunton, Bridgwater, Western Somerset and Mendip.** Bringing together the key market towns of Bridgwater and Taunton, the nationally significant development at Hinkley Point, and the wider rural and coastal geography of Western Somerset and Mendip, we will seek to harness the mixed economy of the Western Somerset and Mendip area through its skills development. Building upon existing strengths in nuclear, advanced manufacturing, digital capacity, health and social care, agritech, construction and tourism, we will seek to accelerate upskilling and earnings through focused employment and upskilling activity

This will include building upon the expertise of Bridgwater and Taunton College and Strode College; enhancing the capacity of members of the Dorset and Somerset Training Provider Network ('DSTPN') to meet both specialist skills need and wider local provision; supporting the development of University Centre Somerset to provide strengthened higher education provision within Somerset; leveraging high value opportunities around clean growth and energy / engineering competencies emerging from Hinkley Point and development of the Gravity Enterprise Zone; and supporting programmes that further support aspiration and employment amongst young people.







- o **South Somerset.** As a centre for UK rotorcraft and helicopter manufacture, and hub for wider aerospace and aviation technologies, we will focus on maximising the impact of the aerospace and high value engineering / manufacturing cluster within South Somerset. This will include building the capacity of Yeovil College to support the sector, as well as working across wider education partners, with DSTPN partners and other provider capacity to build upon South Somerset's wider economy, with strengths and opportunities around tourism, agritech and health and social care. A specific focus will be placed upon inclusion and attainment, with support for employability, upskilling and clear pathways to work and progression.
- o **Torbay and South Devon.** Drawing on the mixed economy of the English Riviera and the strength of both South Devon College and the work of wider DCTPN partners, we will focus on maximising the development of existing and new opportunities within the bay. This will include new employment and upskilling within HotSW wide growth sectors such as electronics and photonics, marine engineering, and tourism and wider coastal industries. This will include a specific focus on maximising the impact of any future Tourism Zone in terms of skills and employment. Recognising long standing challenges within the area around inclusion and employment, a specific focus will also be placed upon aspiration and talent retention, seeking to support young people and adults to grow and development within the bay, as well as support companies to upskill, renew and refocus as the economy evolves.



## Covid-19

Whilst this Strategy has been designed to identify the medium to long term skills requirements of the Heart of the South West, it cannot ignore the recent impact of Covid-19 on the skills and education environment. With a 12-14% reduction in local GDP as a result of the pandemic in 2020/21, a trebling of local unemployment (including increasing levels amongst those under 24 by 500%), and significant education disruption for young and people and adults alike, it is critical that the area has a joined up and focused response to the recent downturn.

This strategy therefore seeks to support wider efforts around Covid-19 recovery, building upon the ambitions of local partner recovery plan and the Local Enterprise Partnership's Building Back Better Framework, to return the area to growth and stability as quickly as possible. The core priorities and objectives set out through this strategy already will contribute to recovery, with a focus on new opportunities, sector renewal, reinforcing individual progression and resilience, and supporting individuals to have the flexibility they may need in a transformed economy.

However, the impact of Covid-19 also requires more immediate action, with a distinct focus on supporting people through the ongoing impact (which has yet to end as of January 2021) and then into recovery and renewal. In particular, it will be important to ensure that those individuals and communities most at a disadvantage, and likely hardest hit by Covid 19, are able to access a level playing field of support and opportunity to avoid permanent economic scarring and worsening economic inequalities.



As such, partners intend to prioritise the follow core objectives linked to Covid-19 recovery:

- **Work together to enhance the Heart of the South West's support offer for young people, both those in and those recently leaving education.** Seek to reinforce careers advice and guidance and the transition process into further learning or work / vocational training, with a focus on reaching those most at risk of exclusion. Further promote information about apprenticeships and employment activity to young people. Maximise the impact of initiatives like Kickstart, the Apprenticeship and Traineeship support grants for employers and wider mental health, functional skills and other residual support offers.
- **Seek to work towards a single retraining / employment support offer for those leaving work.** Seeking to support individuals to upskill and reskill if they wish to do so to find a better job or access new opportunities / sectors. Maximise the impact of initiatives like the Lifetime Skills Guarantee and Skills Bootcamps to fast track individual opportunities. This action includes a focus on supporting those hardest hit by the downturn, notably those currently in furlough, many of which will likely not return to their existing role after April 2021 but may have been outside of work for over 12 months. The offer will also incorporate enterprise / self-employment opportunities as alternative pathways into work.
- **Work across provision to ensure that digital and remote learning offers, and associated pathways to work and learning, are available to all.** Seek to ensure young people and adults are able to both access and have the skills to access digital training offers and approaches, with a focus on supporting those furthest from the market / most at risk of digital exclusion.
- **Enhance skills and employment support within traditionally harder communities and places across the Heart of the South West.** Ensuring that historic gaps in employment, training and educational attainment are not worsened by the Covid-19 crisis through the roll out of tailored provision and support where able and affordable.



- o **Work with business support partners to promote and fast-track self-employment and enterprise activity for the unemployed, those wanting to change career or those that may benefit from an alternative pathway to work.** Support enterprise and self-employment activity focused on maximising new business opportunities emerging beyond Covid-19 and supporting those who wish to follow the HotSW's tradition of entrepreneurial behaviour. Support to focus on enhancing skills for business, including around business leadership, financial management, customer service, digital competencies and core business skills. Promote enterprise as a career pathway to students and young people, seeking to harness their potential as new business leaders.
- o **Work with opportunity sectors to promote a joined-up recovery offer over the next 12-18 months,** with a focus on fast tracking new employment opportunities, promoting relevant training and apprenticeships activity, and engaging with young people and adults alike about the post Covid-19 opportunities and skills. This will include a focus on opportunities in health, engineering and manufacturing, digital industries and around clean growth.
- o **Seek to engage with businesses in the hardest hit sectors to support upskilling and wider staff training where appropriate, promote staying in work to more vulnerable individuals, and supporting redundancies where unavoidable.** Recognising that the Covid-19 crisis has had a disproportionate impact on certain sector (notably Tourism, leisure, hospitality and retail) seek to work with companies and individuals in relevant sectors to support either renewal or transition processes. This will include taskforce approaches in the largest cases, but also local initiatives, pilots and programmes which tailor support too individual sectors.
- o **Working with our Colleges, Universities and wider training providers to adapt to the new environment.** Supporting providers as they work through any financial or operational challenges and requirements which may emerge as a result of the pandemic.

---

## Skills Action Plan

---

The Heart of the South West's Skills Strategy sets out the area's preferred approach to skills development over the next five years, including our preferred sector focus, geographic approach, and priorities for COVID recovery.

Strategy alone however will not deliver the progress sought around skills and employment over the next decade, with a clear need for partners to come together across the HotSW area to ensure that relevant delivery activity is commissioned, funding secured, and outcomes achieved. To achieve this, and respond to Covid-19 effectively, an unapologetic focus on prioritising delivery of the area's agreed priorities will now be needed, seeking to fulfil the opportunities and address the challenges outlined elsewhere in this document.

This chapter therefore sets out a complementary action plan for the delivery of skills and related employment priorities over the next five years. Drawing upon the Skills Advisory Panels' detailed evidence base, the skills action plan identifies specific activity areas and programmes against each of the ten priority areas already identified through our Core strategy, seeking to provide a single blueprint for skills development across the Heart of the South West area. It also seeks to deliver on our core ambitions around clean growth, improved productivity, and social inclusion through skills and employment activity.





Ensure that our skills and training environment is responsive and forward facing, meeting business and individual need

Action	Description	Desired Outcome	Lead Partner/s	Target Group/s	Timescale	Geography
<b>a) Skills Development</b>						
Secure additional resources to support curriculum development for training and skills development within opportunity areas.	<p>Focusing upon nuclear, marine, digital, aerospace, clean growth and photonics training.</p> <p>Noting the mismatch between provision and demand in many areas, work with local providers to prioritise and develop their offer around areas of unique strength / opportunity. Focus on those facilities and courses / curriculum offers which reinforce economic growth and specialisation and promote wider HotSW opportunities. Explore the potential to use boot camp and other funding approaches to fast-track opportunities.</p>	Improved resourcing and focus on supporting careers within high value and opportunity, with downstream labour market benefits for both local productivity and around improving individual and community prosperity.	HotSW LEP, Colleges, IoTs DCTPN / DSTPN, Universities, HotSw DSP, ESBs, ESFA / DfE	All	Medium Term (1-3 years)	Nuclear – Western Somerset; Marine – Plymouth and coastal areas; Aerospace / Aviation - South Somerset and Exeter / East Devon; Digital – Exeter; Photonics – Torbay and South Devon
Develop an enhanced offer around high demand career opportunities that cut across the HotSW.	<p>Focusing upon Health and Social Care, Construction, Logistics, Agritech, and Clean Growth occupations.</p> <p>Recognising currently unmet demand in the health, construction, logistics, agritech and green sectors, work with providers and business to develop new capacity and secure new investment into related skills and training. Explore the potential for boot camp and other funding approaches to fast-track opportunities.</p>	Improved throughput and progression into opportunity and high value / need career, with a focus on retaining more local talent.	Local Authorities, Colleges, DCTPN / DSTPN, Universities, Careers Hub, National Careers Service, ESBs	All	Short Term (1-2 years)	SAP Wide
Support skill renewal and recruitment through recovery in hard hit sectors.	<p>Focusing upon the Tourism, Leisure and Retail sectors.</p> <p>Work with Covid-19 impacted sectors to support staffing training and upskilling, with a focus on transferable skills, leadership and management, and upskilling around core competencies (customer service, financial management, service specific trade skills). Seek to maximise the impact of initiatives like Tourism Zones and national support packages / Lifetime Skills Guarantee. Support redeployment activity where required.</p>	Improved sustainability and business outcomes for sector business. Improved workforce capacity in sectors, including an emphasis on leadership and management.	Trade Bodies, Local Authorities, DWP	All	Short Term (Immediately)	SAP Wide
Agree a new framework approach to ensure that skills funding is directed towards relevant capital capacity and course provision across providers through the use of accurate LMI	Recognising the current mismatch between current supply and demand for skills within the HotSW and drawing on the SAPs role in coordinating local LMI, direct both revenue and capital skills funding towards the development and delivery of economically relevant capacity, reinforcing positive trends and areas of economic opportunity.	Improved and increased throughput of trained staff at all levels into opportunity and higher value sector / career opportunities. Improved workforce productivity across economy.	Colleges, Universities, DCTPN / DSTPN, HotSW LEP / SAP, ESBs, ESFA / DfE	FE Students / HE Students / Business	Medium Term (1-3 years)	SAP Wide
Support higher level specialisation and skills development to support innovation and enterprise activity within opportunity sectors / occupations.	Building upon the opportunity sectors identified through the HotSW LIS, and working with Colleges, Universities, and Institute of Technology partners, seek to bring forward additional project and programmes promoting innovation led skills development. Seek to promote enterprise skills and activity through higher level programmes. This will place a specific emphasis on engineering, health, digital and leadership skills.	Improved innovation and productivity outcomes from related sectors, and heightened levels of enterprise / business start-up activity. Increased investment and Research and development expenditure related to upskilling / additional capacity.	Colleges, DCTPN / DSTPN, Universities, IoT	All	Medium / Long Term (2-5 years)	SAP Wide



Ensure that our skills and training environment is responsive and forward facing, meeting business and individual need

Action	Description	Desired Outcome	Lead Partner/s	Target Group/s	Timescale	Geography
<b>b) Skills Promotion</b>						
Bring forward a joint approach to market and promote higher-level apprenticeship provision across the business environment.	Recognising the opportunity posed for the local area by higher level apprenticeship, particularly amongst opportunity sectors, seek to extend the take up of related provision to more businesses, including SMEs. Explore the potential for new pathways amongst bedrock and other sectors, where added value could be beneficial.	Improve skills and progression outcomes amongst the workforce, with a focus on higher level staff being secure within opportunity and bedrock sectors. Improved workforce capacity, dynamism and output, with the additional potential to extend opportunity to those who may not be able to otherwise access higher level learning.	HotSw SAP, Colleges, DCTPN / DSTPN, Universities, ESBs, Major Employers	16-24 and Adults	Medium Term (1-3 years)	SAP Wide
<b>c) Capacity Building</b>						
Secure significant new investment in our FE Estate.	Building upon the outcomes of recent estate condition survey outcome, and emerging business plans for wider college development, seek to support relevant and prioritised investment into new capacity and facilities to support economically relevant training.	Support for learning and sector / technical capacity across the estate, reinforcing delivery activity to opportunity and wider growth sectors. Improved workforce and productivity outcomes.	Colleges, ESFA / DfE, AoC	FE Students / Business	Medium / Long Term (2-5 years)	SAP Wide, though focused on our FE Estate
Grow the technical skills capacity of our Institutes of Technology and other specialist centres through new facilities.	Recognising the potential and need for technical level skills capacity and facilities within the HotSW, work with the area's Institutes of Technology and wider specialist provision (including its National College) to secure additional funding and opportunities to extend the physical assets linked to technical skills.	Targeted support for the IoTs to increase the provision of trained, technical staff within our primary opportunity sectors, including digital, advanced engineering and health related activity. Positive impacts around productivity, clean growth and wider inclusion and community upskilling.	IoT, Colleges, Universities / HE Institutions, Private Sectors, DfE	FE Students / HE Students/ Business	Medium Term (1-3 years)	SAP Wide
Continue to invest in our Higher University assets to provide HE access for all.	Seeking to build upon the area's significant university capacity and expertise, support the case for further HE investment. This include seeking specific investment in HE capacity where it may not already exist in the area, notably within Somerset, Torbay and Northern Devon.	Support for learning and sector / technical capacity across the estate, reinforcing delivery activity to opportunity and wider growth sectors. New provision in areas which have traditionally been underserved, providing new routes into higher value training and learning. Wider impact on workforce resilience, productivity and upskilling, as well as positive extension of higher-level provision into currently harder to reach communities.	Universities, HE Institutions, Private Sector, DfE	HE Partners / Business	Medium / Long Term (2-5 years)	Exeter, Plymouth, Somerset, Torbay, Northern Devon
Secure additional support for ongoing investment in digital transformation across the education, FE, HE and training provider sectors.	Noting the link between digital skills gaps and infrastructure investment in training and education, seek to secure additional support for digital facilities and capacity across the HotSW's education and learning environment, including provision in schools, colleges, training providers and our universities and other institutions.	Promotion of improved digital competitiveness and access across the teaching environment, with benefits for learners and businesses. Downstream improvements in digital competency across the workforce, with positive outcomes around competitiveness, productivity and clean / remote work practices.	Schools, Local Authorities, College, DCTPN / DSTPN, Universities, wider HE Institutions	FE Students / HE Students	Medium Term (1-3 years)	SAP Wide

## ii Ensure that every individual can access the skills and training they need to achieve their own potential

Action	Description	Desired Outcome	Lead Partner/s	Target Group/s	Timescale	Geography
<b>a) Inclusive Skills</b>						
Develop a dedicated HotSW Social Mobility and Inclusion Programme, promoting capacity building across communities to extend learning opportunities to those furthest from the market.	Recognising the significant gaps around educational achievement, progression and aspiration within our most deprived communities and amongst hardest to reach individuals, develop a programme of projects and activity to promote new pathways to learning. Working education and community partners, develop new projects which support young people and adults from a more disadvantaged background into learning, support community-based learning and talent development opportunities, enhance outreach activity from FE, HE and employers, and seek to support capacity building within community learning organisations and through other community based education and learning projects.	Promoting embedded and tailored learning and community centric opportunities to reduce disparity and provide pathways into wider skill and employment opportunities. Through improving progression and inclusion, promote enhanced work and prosperity amongst harder to reach groups and communities, with positive impacts for both economic growth and wider productivity.	Local Authorities, Community learning organisations, Colleges, Universities,	Voluntary and community sector, DWP	20% most deprived wards / communities Medium Term (1-3 years)	SAP Wide, but focused on bottom 20% most deprived communities and wards.
Work across providers to better align careers advice and guidance support for adults, seeking to maximise the impact of existing and emerging CIAG provision, and support those furthest from the market to thrive.	With a significant proportion of HotSW's workforce still employed in roles below Level 3, seek to work with and support the National Careers Service and wider providers to promote aspiration and ambition, upskilling, and career jumping activity with a focus on our opportunity sectors. Place a specific focus on career management and planning as part of the approach, as well as the potential of vocational pathways / higher level apprenticeships for those already in work.	Increased uptake / labour supply into opportunity and high needs sectors. Specific focus on clean growth, digital and creative industries, advanced engineering and production, modern construction and health and social care.	NAS, SWANN, NAS, Local Authorities, Colleges, Universities, DCTPN, / DSTPN, DWP, Parents	Adults	Medium Term (1-3 years)	SAP Wide
Working with DWP, use a mixture of Sector Based Work Academies and other approaches to provide fast-track opportunities into growth sectors for all.	Reflecting skills gaps within foundation sectors and occupations (notably health, construction, and digital roles), seek to work with DWP and other partners to create fast track routes into relevant careers. Place a specific emphasis on reaching individuals and communities facing the greatest barriers to entry and / or disadvantage.	Increased throughput into opportunity and wider bedrock sectors, improving labour market fit between those re-entering the market and demand. Focus on reaching those further from the labour market and with a barrier to employment / learning.	DWP, Local Authorities, Colleges, DCTPN / DSTPN, ESBs, Major Employers	Adults, with a focus on hardest to reach	Short Term (immediately)	SAP Wide
Support the further development of the HotSW's digital literacy offer, including additional remote delivery of basic and functional skills. Seek to accelerate basic skills uptake working with DWP, adult learning services and wider partners.	Recognising ongoing challenges around basic skills and progression to intermediate skill opportunities amongst adults, as well as specific challenges around supporting those most disadvantaged during the Covid-19 crisis, support additional opportunities to development digital literacy and undertake other basic skills provision.	Increased progression into intermediate skills opportunities and a reduction in digital exclusion across the HotSW. Downstream impacts on employability, with benefits for productivity and social inclusion.	HotSW DSP, DWP, Local Authorities, Colleges, DCTPN / DSTPN, ESBs, Major Employers	Adults, with a focus on hardest to reach	Short Term (immediately)	SAP Wide, but focused upon delivery within the most deprived communities.
Develop new and extended support for older people seeking to retrain, with a focus on supporting opportunity and growth sectors.	Building upon recent data around underperformance on skills and training amongst those over the age of 50, develop a programme / programmes of support to work with those in the second half of their career to upskill / reskill. This may include support to train as trainers and other options.	Improved economic outcomes across all sectors, with a focus on supporting older people to retrain / career jump to new opportunities. Improved inclusion and community impact.	Local Authorities, DWP	Older People	Short / Medium Term (1-2 years)	SAP Wide
Develop renewed support programmes for those seeking to retrain or learn with a disability or other health / mental health related barrier to work, recognising the end of European Funding Support for similar programmes.	Noting the ongoing gap in the HotSW between those in employment with and without a disability, seek to secure additional support for employers and those seeking work around upskilling, training and adaption / reskilling.	Improved economic activity and progression rates amongst those with a disability or other health related barrier to work. Improve community and inclusion outcomes.	Local Authorities, DWP, DoH	Those with a disability, a mental health condition, or other health related barrier to work	Short / Medium Term (1-2 years)	SAP Wide



Ensure that every individual can access the skills and training they need to achieve their own potential

Action	Description	Desired Outcome	Lead Partner/s	Target Group/s	Timescale	Geography
<b>b) Supporting Young People</b>						
Secure ongoing funding support for the HotSW Careers Hub, providing an integrated careers advice and guidance offer for young people within education across the HotSW.	<p>Recognising ongoing challenges across the HotSW around achievement by age 19 of those most disadvantaged, issues around the take up of STEM related roles, emerging challenges from Covid 19, and longer-term challenges around aspiration and ambition amongst young people in the HotSW, enhanced Careers, Information Advice and guidance ('CIAG') provision through the HotSW Career Hub programme.</p> <p>Initially focused on secondary schools and colleges, but seeking to expand provision to cover primary settings overtime. This will also include an ongoing focus on business / education partnership working and engagement and support for governors, headteachers and teaching staff to understand and champion CIAG activity.</p>	Delivery of improved careers outcomes for young people, with a focus on increasing higher value employment uptake within HotSW growth sectors, as well as supporting wider employment, skills and inclusion / aspiration ambitions.	Careers Hub, Business Partners, Schools (Secondary and Primary), Parents	Young People (5-19)	Short / Medium Term (1-2 years)	SAP Wide
Work with apprenticeship lead organisations, providers and businesses to further develop our shared offer on apprenticeship, traineeship and T Levels for young people, and reaching those most at risk of NEET.	Building on the HotSW's relative strength in apprenticeship and vocational training, seek to further promote vocational pathways into work and learning, with an emphasis on promotion to businesses, young people, education providers and parents and development of a shared approach. Seek to build on examples of good practice in Plymouth, Exeter and around Hinkley Point, as well as work championed and led by the DSTPN and DCTPN and projects such as Skill Up Somerset and Ask. Seek to secure further funding for such projects where appropriate.	Acceleration of vocational training uptake across opportunity and bedrock sectors. Improved uptake by employers across the economy. Improved throughput from learners within protected or higher need groups, and from communities with higher levels of income deprivation.	SWAAN, NAS, YAAN DCTPN / DSTPN, Colleges, Universities, Local Authorities, Employment and Skills Boards, ESFA / DfE	Young People (14-24)	Medium Term (1-3 years)	SAP Wide
Maximise the impact of ongoing initiatives to support youth unemployment, including through the Kickstart programme.	Recognising the significant increase in youth unemployment since March 2020, seeking to utilise the various policy tools provided by Government to maximise youth employment and training / progression. Ensure a firm progression route through such programmes. Seek to reinforce with additional support around core skills, mental health, and other support to enhance access and resilience. Place a strong focus on those most at risk from Covid-19 and or facing a significant disadvantage.	Increased employment and training uptake amongst 16-24-year olds, with a focus on ensuring improved apprenticeship and traineeship progression. Downstream and long-term productivity benefits, seeking to avoid economic and employment scarring.	Gateway Organisations, Local Authorities, DWP, Colleges, Universities, DCTPN / DSTPN	Young People (16-24)	Short Term (Immediately)	SAP Wide



Ensure that every individual can access the skills and training they need to achieve their own potential

Action	Description	Desired Outcome	Lead Partner/s	Target Group/s	Timescale	Geography
<b>c) Maximising Individual Opportunity</b>						
Pilot skills escalator programmes to cover three opportunity sectors; Digital Futures; Engineering Futures and Energy Futures.	Building upon the economic opportunities identified through the HotSW LIS, seek to pilot specific escalators and bootcamp activity to maximise skills and employment opportunities for local people within the area's prioritised growth sectors. Focus upon ensuring such opportunities are directed towards and extended to individuals with a recognised barrier to advancement, seeking to address challenges around disadvantage.	Improved local throughput into high value and opportunity sectors, with a focus on progression across multiple educational levels. Focus on reaching those further from the market.	HotSW LEP / SAP, Colleges, DCTPN / DSTPN, HotSW DSP, Universities, ESBs, Major Employers	All	Medium Term (1-3 years)	All, with a focus upon Exeter, Plymouth and Taunton (Digital Futures); Western Somerset, East and Northern Devon (Energy Futures); and Western and South Somerset, Greater Exeter and North Devon, Torbay, and Plymouth (Engineering Futures)
Secure additional support for digital skills provision for those within non-digital sectors, supporting individuals to upskill and enhance both their own and their sectors future resilience.	Recognising challenges around digital skills capacity across the economy, and notably amongst more deprived communities and disadvantaged individuals, seeking to provide additional provision which can support those in and outside work to further their digital capabilities. Seek to promote digital careers and pathways in non-digital industries.	Promoting additional digital literacy and expertise across the HotSW economy, in both digital and non-digital roles and sector. Downstream impact on productivity within small and large businesses, individual opportunity and wider prosperity and growth.	HotSW DSP, Local Authorities, Colleges, DCTPN / DSTPN, Universities, ESBs	All	Medium Term (1-3 years)	SAP Wide
Develop a more structured approach to leadership and management skills delivery and uptake.	Work with providers and the private sector to promote and development enhanced opportunities for in work leadership and management development.	Improve focus on skills and workforce development, as well as wider business productivity benefits. Downstream benefits in terms of competitiveness and wider economy, inclusion, and sustainability outcomes.	Colleges, DCTPN / DSTPN, Universities, IoT, ESBs	All	Short Term (1-2 years)	SAP Wide
Working with business support organisations and DWP, seek to develop a shared approach to self-employment and enterprise support as a route to employment and valued work.	Recognising the value of self-employment and enterprise as a route back into employment for both those who may have been affected by Covid-19, but also those who may see new opportunities, development of a joint enterprise / self-employment programme to support individuals to set up on their own.	Improved economic output, through business creation and job creation. Downstream productivity and social inclusion benefits, through additional business activity, additional employment and more sustainable employment options.	HotSW Growth Hub, DSTPN / DCTPN, DWP	All, with an emphasis on young people and those at risk of unemployment / displaced by COVID.	Short / Medium Term (1-3 years)	SAP Wide
<b>d) Inclusive Education</b>						
Work with education partners / academy groups to identify additional opportunities for joint activity around improving inclusion and supporting aspiration amongst the hardest to reach, best practice in teaching and wider pedagogical projects.	Noting national and regional evaluation around the importance of sharing of pedagogical best practice, further support schools and wider institutions to come together to pool knowledge and reinforce individual student outcomes.	Improved achievement and progression amongst the hardest to reach into further learning and higher value careers. Specific focus on promotion of opportunity and higher value sectors. Focus on outreach and intervention to improve community and individual inclusion.	Schools, Local Authorities, Colleges, Universities	Young People	Medium Term (1-3 years)	SAP Wide
Working with partner organisations, develop supported pathways into higher value careers for those with more complex backgrounds.	Noting ongoing gaps around earning levels and employment amongst those with a protected characteristic, seek to provide enhanced support for individuals with a more complex pathway to opportunity roles. These include those with a disability or other health related barrier to work, within an occupation where gender or other demographic gaps are relevant, from a deprived community or other complex background.	Improved learning outcomes within those with a protected characteristic or need, or from within communities considered the most in need of support. Increased throughput of local talent into high value and opportunity sectors.	Colleges, DCTPN / DSTPN, Universities, Local authorities, ESBs, ESFA / DfE, DWP, DoH	All	Medium Term (1-3 years)	SAP Wide





Ensure that all skills and training investment and activity contributes to both improving our shared prosperity and collective productivity

Action	Description	Desired Outcome	Lead Partner/s	Target Group/s	Timescale	Geography
<b>a) Supporting and working with business</b>						
Develop a single gateway approach to business training, skills and employment advice and support, working with the Growth Hub and wider partners to provide a seamless support service.	Recognising ongoing challenges around fragmentation of advice and the complexity of the support involved, seek to reinforce the business pathway to workforce advice and support. Ideally taken forward through a single portal or approach.	Improved take up of business training and learning opportunities across multiple areas (apprenticeships, traineeships, in work training, innovation links etc). Improved progression and outcomes working with both opportunity sector and bedrock.	Growth Hub, Local Authorities, Colleges, Universities, ESBs	All	Medium Term (1-3 years)	SAP Wide
Further develop linkages and joint working approaches between FE and HE institutions, building on positive examples like the Institute of Technology.	Recognising the HotSW's progression gap from Level 3 to Level 4 and beyond, seek to support reinforced linkages between HE and FE, supporting organisation like our Institutes of Technology to provide reinforced opportunities to enhanced skills progression in and outside of work. This will include close working with the private sector around maximising the impact of relevant opportunities.	Improved outcomes across technical and higher-level skills levels, with a specific focus on growth within opportunity sectors. Contribution to wider sustainable development and clean growth.	Colleges, DCTPN / DSTPN, Universities, IoT, HotSW LEP, ESBs, Major Employers	Business	Medium Term (1-3 years)	SAP Wide
Continue to promote business education linkages amongst schools, supporting both enhanced educational opportunities and wider aspiration.	Addressing ongoing gap in progression beyond Level 3 and into opportunity sectors, support business education linkages beyond careers advice, seeking to promote cross curriculum working and other opportunities to engage young people with business specialisations. Build on strong exemplars such as those in Plymouth, Somerset's Education Business Partnership and the Careers Hubs Cornerstone Approach.	Improved career and learning progression amongst young people, with a focus on high need and opportunity sectors. Improved educational achievement and local economic and social inclusion outcomes.	Schools, Careers Hub, Local Authorities, ESBs	Young People / Business	Short Term (1-2 years)	SAP Wide



Ensure that all skills and training investment and activity contributes to both improving our shared prosperity and collective productivity

Action	Description	Desired Outcome	Lead Partner/s	Target Group/s	Timescale	Geography
<b>b) Partnership and Intelligence Led</b>						
Secure ongoing support for the development of the HotSW's shared evidence and labour market intelligence approach, working through the Skills Advisory Panel and with our universities.	In line with Government's requirement for alignment and refinement of the local intelligence base, seek to secure longer term support for LMI activity and wider intelligence sharing and gathering.	Improved intelligence supporting targeting of investment and activity, with a focus on opportunity sectors.	HotSW SAP, Universities	HE / FE / Business	Short / Medium Term (1-2 years)	SAP Wide
Building on the Skills White Paper, consider the potential for 'Trailblazer' status within the HotSW area / areas.	Acknowledging the potential of the Local Skills Improvement Plans, And governments preferred approach to refining partnership working, seek to work together to make a case to act a s pilot for the trailblazer process.	Improved alignment and further refinement of the LSR approach.	Chambers and other business organisations, SAP, private sector, Local authorities, Colleges, HEIs, Training Provider Partners.	All	Short Term (1-2 years)	SAP wide, though tailored to meet lead business organisation/s geography.
Agree a renewed approach to working with the business community around capturing sectoral and other labour market intelligence.	Seeking to further improve the business relevance and applicability of the HotSW's evidence base, work with ESBs and other business organisations, as well as individual businesses to support the gathering and analysis of skills and demand data.	Improved intelligence supporting targeting of investment and activity, with a focus on opportunity sectors.	HotSW SAP, Universities, ESBs, Major Employers	Business	Medium Term (1-2 years)	SAP Wide, though focused upon the area's 5 ESB partnership areas.
Support Employment and Skills Boards and other relevant representatives to act as champions for capturing local labour market intelligence.	Recognising the leadership role of our Employment Skills Boards and related organisations, work with relevant organisations to secure ongoing support towards their local coordination and alignment role.	Improved reflection between intelligence and business need, leading to improved targeting of resources and activity to better meet local demand. Improved productivity and inclusion outcomes, with a focus on local tailoring.	HotSW SAP, Local Authorities, ESBs	Business	Short Term (1-2 years)	SAP Wide
Maximise the impact of information and signposting service, like the LEPs Launchpad approach piloted in Devon and Plymouth.	Recognizing the value and potential of shared signposting and best practice from other locations, seek to build upon the LEP's Launchpad approach, using a single local partnership / web service to reach employers, learners and other stakeholders.	Improved signposting and alignment of labour market and wider advice. Increased throughput into opportunity sectors and wider areas of high demand.	HotSW LEP, Growth Hub, Local Authorities, ESBs	All	Short Term (1-2 years)	SAP Wide

---

## Assessment of SAP Progress

---

### Introduction

The Heart of the South West has a long history of joint working and collaboration around skills and employment matters, stretching back to the development of sub-regional arrangements in the late 1980s and 1990's. As such, the area benefits from both a long-standing commitment to joint working and collaboration on skills matters between business, providers and public sector partners, with extensive experience in taking forward shared projects and ambitions.



Whilst this document encompasses the first iteration of a shared Skills Strategy and Action Plan for the Heart of the South West area, partners within the Heart of the South West have been working together around its core themes and ambitions for a number of years. At a LEP level, partners first formed the HotSW People Leadership Group in 2014, bringing together public, private and business representative to agree shared skills and employment objectives for the area's Strategic Investment Plan, and direct the emerging European Social Fund and FE Capital Programmes. Partners have been active since this point in developing and implementing a range of programmes and shared projects across the area.

The launch of the Heart of the South West Skills Advisory Panel and the development of this document therefore, marks more of an evolution and acceleration of existing activity in the HotSW, then a revolution. The implementation of the SAP over the past year has provided an opportunity to reaffirm local partners commitment to working together to advance skills delivery and achievement, and to align behind key opportunities and needs.

The rest of this chapter provides a broad description of the current and recent activity of the SAP and SAP partners within the HotSW, and the progress already being made around the crucial themes of this document.



## Impact on local skills provision

The Heart of the South West SAP benefits from a mature and long-standing set of relationships with local providers, including close working links between the LEP / SAP and its 11 colleges, 4 universities and the areas' two training provider networks (Dorset and Somerset Training Provider network, and Devon and Cornwall Training Provider Network).

As such, provider and LEP / SAP prioritisation have been broadly aligned through partnership working in the Heart of the South West for a number of years, with strong growth across technical, STEM and high demand disciplines across the local provider landscape. Notably areas of joint work / delivery since 2014 include:

- o **Development of the South West Institute of Technology**, bringing together 4 of the area's Colleges (City College Plymouth, Exeter College, PETROC and Bridgwater and Taunton College) and its two universities to successfully bid for one of the UK original 12 IoTs, the consortia worked closely around the development of the scope and focus of the SW IoT, with its emphasis on engineering and digital skills at Level 4 and beyond.
- o **Delivery of skills provision linked to Hinkley Point, working closely with Bridgwater and Taunton College, DSTPN members and wider partners.** Closely working around successive skills programmes emerging from Hinkley Point, including Bridgwater's development of associated engineering and construction capacity, successful bids to secure the Southern Campus of the National College for Nuclear, and wider investment in engineering and construction capacity across the area.
- o **Delivery of Digital Skills within Exeter.** Championed and funded by Exeter College and University of Exeter for several years, digital and STEM based provision has been an area of enhanced focus in the city. The LEP, working alongside the HotSW DSP, has sought to support this approach over recent years, seeking to reinforce investment and support for related programmes and projects as far as possible.





- o **Support for High Tech Engineering and Innovation in South and Northern Devon.** Working with South Devon College and PETROC, the LEP has supported the development of STEM and engineering capacity at both colleges, seeking to enhance both their business responsiveness within core sector and apprenticeship capacity within LEP growth areas.
- o **Co-Development of Growth Fund Business Cases, ESF Projects and other provision.** The SAP core team has also worked closely over the past 2 years with colleges, universities and wider provider partners to develop a range of joint applications and projects which have extended curriculum and delivery across the LEP area. This has included cross sector investment in digital capital development within the area's Colleges; joint business cases to support the development of specialist sector capacity in nuclear, digital and marine with funding from BEIS and DFE; European funding support to enhance technical skills and apprenticeship provision covering engineering, health and other high demand skills areas; and most recently, funding to support digital and technical bootcamps and fast track retraining, working with both college and independent training providers

Looking ahead, deepening integration between provider and SAP approaches is a key priority, with work already ongoing with multiple College around their future business plans and delivery approaches. It is anticipated that this joint working will be reinforced through new funding programmes, such as the Lifetime guarantee, Community Renewal Funding and wider opportunities, due to come online later in 2021.



## Taking a Local Leadership Role

Inheriting the role of the LEP's People Leadership Group, the Heart of the South West Skills Advisory has rapidly taken on the mantle of strategic leadership around skills matters and shared priorities across the Heart of the South West area. Bringing together a strengthened body of lead partners and decision makers, the SAP now provides the local area with a central and formal recognised leadership mechanism for skills policy development, intelligence sharing and decision making.

Whilst in many ways, this reflects the previous role of the LEP's People Leadership Group, the renewal and strength of membership provides the SAP with a differing personality and authority to its predecessor. In particular, integration and membership by the area's five formal Employment and Skills Board, nominated membership from the area's 11 colleges, 4 universities, and two training provider networks, and business membership from key local businesses including EDF, Waitrose and Kawasaki, the Chambers and FSB, provide the SAP with significantly greater depth of knowledge and breadth of intelligence than its predecessor.

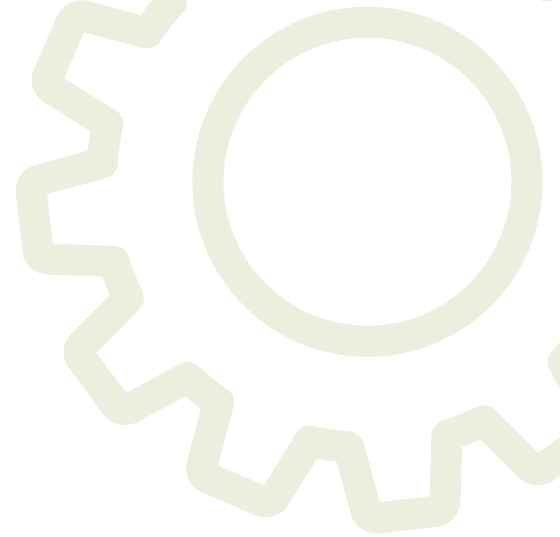
This capacity and reach, as well as renewed commitment to partnership working, has proven invaluable during the recent Covid-19 crisis, providing a shared forum for discussing issues arising, feedback sector by sector intelligence around impact and local challenges, and work together to develop joint solutions and approaches. SAP members have been involved or led the formation of each of the LEP areas four local recovery plans; SAP team members have jointly come together to formulate and launch new projects around supporting redundancy and reskilling, and SAP structures and inter relationships have provided opportunities to bring together partners around wider initiatives such as the Kickstart programme.



## Enhancing local knowledge

Over the past 18 months, the HotSW Skill Advisory Panel has taken forward an extensive analysis of local skills demand, skills performance and overall economic as part of its lead role on skills and employment evidence. Developed in partnership between the SAP Core Team and the University of Exeter's Marchmont observatory, the final document has provided the local area with core data and skills information which has both informed our LIS, this document and wider recovery and local economic development activity. Data has also been shared extensively with local business and provider partners / SAP members, informing their work with Government, developing relevant business cases and plans, and supporting local priorities for spend and sector development.

Of particular importance, evidence resources linked to the SAP have been crucial during the recent Covid-19 crisis in allowing for real time understanding of issues emerging across the Heart of the South West area. Data tools and evidence shared through the SAP on local vacancy rates, apprenticeship data, skills and training performance and wider social economic indicators, have been used across every local area over the past 9 months to inform evidence-based recovery strategies, develop associated business plans and project applications, and shape delivery.



## Leading on the Skills Action Plan

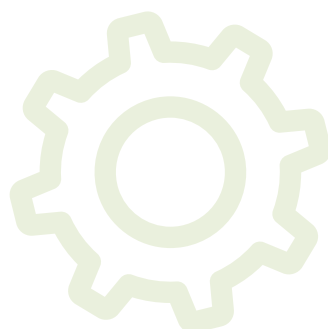
This document sets out an ambitious and wide-ranging series of shared priorities and areas for action within the Heart of the South West, seeking to build on the gap between demand and supply in some areas, and address ongoing challenges around performance amongst those with a barrier to work or learning or from disadvantaged background.

The SAP benefits from substantive funding provision already being rolled out around many priorities outlined within this document. This includes around careers advice and guidance, apprenticeship provision, technical skills support and around basic skills and digital provision. Additional funding is also due to come forward over the next period, including through the Community Renewal Fund and via National Retraining Funding.

In many of these cases, the challenges faced within the HotSW often relate less to funding being available for the activity, and instead are issues of alignment and coordination between multiple funding departments and organisations. This is notably the case around support for the unemployed, where duplicative funding for basic skills is often deployed by DfE and DWP, but no flexible funding is in place to support mental health preparedness. Others policy priorities, such as support for Career advice are funded, but subject to one year rolling funding settlements that make surety and planning a significant challenge.

Look ahead therefore, and seeking to build upon the reinforced partnership approach between business, providers and wider stakeholder outlined with the recent Skills White Paper, the focus of the SAP into the next period will be around aligning provision and resources to meet the objectives of this strategy. In particular, this will include working together to support the most disadvantaged to access training and go beyond Level 2; additional activity to promote progression beyond Level 4 across multiple sectors; and support for those sectors and individuals most impacted by the recent pandemic.

The HotSW SAP, and the partners it brings together, start however from a strong foundation, with a business and demand focused partnership incorporating all key players within the skills and employment environment ready to play its part in ensuring that the HotSW area is now able to meet its potential.





## Case Studies

### Theme: Skills Development

#### Building Greater Exeter

Building Greater Exeter is focussed on supporting the construction sector across Exeter, East Devon and Teignbridge to address the skills and recruitment challenges it faces. It has 3 key areas of focus;

- Inspire the future workforce through an effective engagement programme with schools and young people, supported through the Education Hub,
- Support employers by facilitating recruitment to existing vacancies and providing opportunities for up-skilling and re-skilling,
- Support the adoption of the National Skills Academy for Construction model using the Client Based Approach, through procurement and planning.

In the 2 years since its inception, the project has attended in excess of 30 careers and employment focussed event and this has seen engagement with over 35,000 people. In addition, Building Greater Exeter runs a weekly 'Job Shop' currently access via the 'phone. There are currently 28 project partners representing the private sector, housing associations, training providers and local councils. All these partners have recognised the need to have a focus on promoting the sector to the future generations, so that they are able to meet the growing demand anticipated.

Building Greater Exeter continually seeks creative approaches to be able to support the industry to be more collaborative with the services and support available that can lead to much stronger workforce pipelines. A current focus is working with main contractors and the construction supply chain delivering major projects across Exeter and the wider area. The primary focus of this work is to promote the opportunities to engage with young people through traineeships, apprenticeships and work placements, building a sustainable pipeline of talent into the sector.





SOUTH WEST

I O T

## Theme: Skills Development / Capacity Building

### South West Institute of Technology (SWIoT)

Bringing together key university, further education and business partners from across the Heart of the South West and Cornwall, the South West Institute of Technology is one of 12 unique technical skills collaborations selected by Government in 2019 to deliver the next generation of digital and advanced skills training.

Delivered through 6 discrete campus centres based at Exeter College, Petroc College, City College Plymouth, Bridgwater and Taunton College, Truro and Penwith College and University of Exeter, and with further delivery through the University of Plymouth, the SWIoT is due to cater for up to 2,500 students per annum on apprenticeship and full-time courses by 2025. Working with integrated business partners through its Board, including Babcock International, the Met Office, TDK Lambda and Oxygen House, SWIoT will offer unique, business led curriculum and qualification offers at the forefront of Government's ambitions for future skills design and delivery.

Support this approach, the SWIoT is underpinned by a £25m joint investment from Government and member partners, with facilities currently being constructed across the area. When complete, SWIoT's combined facilities will match the best available in the UK, including virtual and augmented reality environments, digital learning laboratories, artificial intelligence arenas, new clean workspaces, workshops, emergent manufacturing spaces with industry level equipment, and shared learning spaces.



## Theme: Supporting Young People

### Heart of the South West Careers Hub

The Heart of the South West Careers Hub is the Country's largest local careers network, supporting 157 secondary schools, colleges and wider educational partners from across the HotSW to provide the area's young people with an enhanced careers, information, advice and guidance offer.

Jointly funded by the Careers Enterprise Company, the Local Enterprise Partnership and Local Authority partners, the Careers Hub's dedicated team of 14 advisors champion the achievement of the Government's Gatsby Benchmark approach across the area, promoting high quality work experience; highlighting routes to academic progression and further / higher education; supporting vocational pathways; collaborating on curriculum development and career encounters; and bringing together business and education partners.

A key element of the Hub, the Enterprise Advisor Network matches over 90 individual business volunteers from across key sectors and employers within the Heart of South West with local schools, supporting their careers activity, informing strategy and curriculum thinking and providing a real-life linkage between local employment opportunity and individual progression. Complemented by a network of Cornerstone strategic employers and drawing in business education provision and support from across the public and private sector landscape, the hub provides a focal point for engagement and alignment of support for those entering the world of work and further learning.

Since its establishment in 2015, the HotSW Careers Hub has worked with over 50,000 young people collectively, supporting individual progression, enhanced aspiration, and better jobs and employment outcomes for students and business alike across the Heart of the South West. .

THE CAREERS &  
ENTERPRISE  
COMPANY





## Theme: Supporting Young People

### Skill Up Somerset

Skill Up Somerset is an independent and free advisory service, working with businesses, training providers, local government and individuals to support individual progression and enable new roles and opportunities. Supported through a mixture of local and national funding, the initiative seeks to provide up to date, expert advice around apprenticeships, traineeships and other skills and training pathways.

As part of its innovative approach, Skill Up Somerset brings young people, adults and business together, connecting individuals to opportunities, as well as providing advice and guidance around progression. Providing a comprehensive skills advisory service across the Somerset area, the programme also supports businesses to explore what funding is available to enable them to take on apprentices and upskill existing staff, raising awareness of training opportunities and demonstrating the benefits of acquiring new skills. As a not-for-profit organisation, Skill Up is dedicated to securing the best fit for training rather than steer business or employees in a particular direction.

In the 20 months since the project inception, the project has engaged with more than 300 businesses and supported more than 200 individuals, complemented by a social media presence which has rapidly expanded.

## Theme: Inclusive Skills

### Heart of the South West Digital Skills Partnership

The Heart of the South West's award-winning Digital Skills Partnership (DSP) was launched in June 2018, bringing together the public, private and third sector to tackle the digital skills divide in Somerset, Devon, Plymouth and Torbay. It is one of seven trail-blazing Digital Skills Partnership's funded by the Department for Digital, Culture, Media and Sport.

Since inception, the DSP's 25 core partners, including key local employers and digital leaders such as the Met Office, UKHO, BT, Bluescreen IT, Cosmic, Microsoft and Leonardo Helicopters, have worked together to champion local digital skills development and delivery through a share approach. This has seen the partnership drive forward a range of related activity over the past three year, including support for over 800 business through the 'Bounce Back Digital Partnership', support for 200 women and individuals from deprived wards to move into digital careers; and project and programmes working with schools, job seekers, employers and community organisations to champion digital achievement.

Currently entering its third year of life, the HotSW DSP has recently led on the development and implementation of the area's Digital Bootcamp programme, supporting 750 new learners into digital and technical roles, with additional work currently ongoing to further extend the range of partners engaged and its delivery programme.



## Theme: Maximising Individual Opportunity

### Heart of the South West Careers Learning Pilot

The Careers Learning Pilots, developed by the Department for Education (DfE), were designed to test innovative approaches to lifelong learning and inform the design of the National Retraining Scheme. The Heart of the South West LEP was one of five areas conducting the Cost and Outreach (Career Learning) Pilots, which were designed to develop the evidence base on how more adults can be engaged and be supported in learning.

The £2.5million Heart of the South West pilot explored the impact that tailored work coaching and outreach, when complemented by subsidised provision, can have upon the uptake of high demand technical and intermediate training opportunities.

The project:

- Supported harder to reach under-represented adults, such as: older people, women returners, young people from deprived areas, to achieve higher level qualifications in high need sectors.
- Included Level 3 and 4 qualifications in areas such as: Social Care, Engineering, Education, IT and Finance.
- Provided subsidised qualifications for the learner (£1.8million), wraparound support, and careers advice (£700,000) for those who have traditionally struggled to progress.
- Delivered over 450 Level 3 training programmes and supported 170 people through related careers advice and guidance during its first year of operation in 2018/2019.

After the project completed in September 2019, key lessons were and integrated, by the Department of Education, into the National Retraining Scheme.

**CAREER LEARNING PILOT**

**Are you interested in retraining or progressing your career?**

New subsidised courses for adults running in November and January:

- Level 2 Bookkeeping
- Level 3 Accounting
- Certificate in Education and Training

Funding is available as well as support with transport, childcare and a dedicated Careers Coach for careers guidance.

Limited places available in Paignton, Newton Abbot and Plymouth.

To enquire, please email [adultguidance@southdevon.ac.uk](mailto:adultguidance@southdevon.ac.uk) or call 01803 540598.

Please note there will be an administration fee applicable on enrolment.

**South Devon College** **aat**

[southdevon.ac.uk](https://www.southdevon.ac.uk) | 01803 540598



## Theme: Maximising Individual Opportunity

### Train4Tomorrow / Digital and Technical Bootcamps

The Heart of the South West LEP was one of six areas selected by the Department for Education in late 2020 to pilot its digital and technical bootcamp learning programmes for adults. Branded as Train4Tomorrow, the bootcamp programme focuses upon 12-16 week bootcamps that have been designed in conjunction with employers, seeks to fast-track new recruits into to work-ready rolls within high demand, high value technical sectors and careers. Training is free to individual, with a guaranteed interview within 6 months of completion.

A £2.2m programmes in total, Train4Tomorrow will offer training to 1000 adults over the first six months of 2021, delivered by a mixed partnership of public and private organisations including Babcock, Cosmic, Bridgwater and Taunton College, Bluescreen IT, Exeter College, The Learning People, Focus Training Group, Train4All and South Devon College. Jobs being offered include design roles working with the MoD; specialist roles leading on software design, cyber security and data science; and additional high value technical pathways into construction, green energy and low carbon roles; and advanced engineering opportunities.

Uniquely, the Train4Tomorrow has seen several of its bootcamps designed specifically for certain employers to develop staff, for example working with Babcock international to meet their growing demand for Naval Engineers, whilst others such as the digital healthcare bootcamp has been designed in conjunction with multiple NHS STP and CCG partners, or Torbay's growing Photonics' cluster.



## Theme: Partner and Intelligence Led

### Skills Launchpad

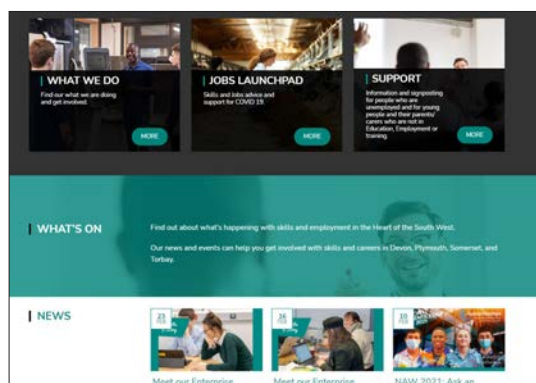
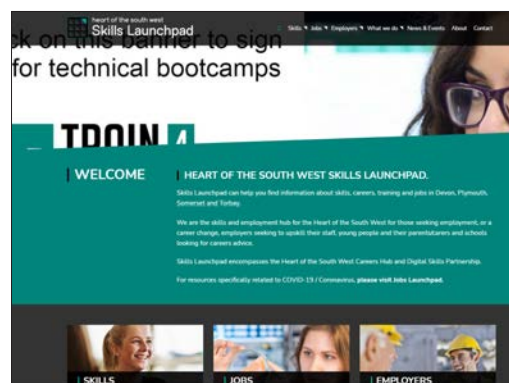
The Skills Launchpad website was launched in September 2020. The website provides the Heart of the South West with both a responsive platform for existing initiatives such as the Careers Hub and Digital Skills Partnership, as well as a foundation for promoting and aligning new and arising projects.

Featuring dedicated pages for apprenticeships, t-levels, traineeships and supported internships, skills provider information, job searching information and more, the platform informs and celebrates skills and employment activity across the Heart of the South West.

Since its launch the website has allowed partners across the Heart of the South West to collaborate and reinforce around core campaigns, messages and schemes; from National Apprenticeship Week 2021; hosting key events / resources; to the 'rewrite the story' enterprise adviser campaign, seeking new business people to support local schools and colleges around careers advice and guidance; to the promotion of National Careers Service events and the digital bootcamp campaign.

During COVID, the website has also played a crucial role as a hub for intelligence and support for those at risk of losing their job or seeking new career options; hosting virtual job fairs, signposting to new learning or training offer; and providing links to fast track recruitment and deployment opportunities across the HotSW's growth sectors.

Growing to over 4,500 user and over 10,000 page views in January and February 2021, the website is increasingly a key resource for customers, businesses and training providers in the Heart of the South West, with the Skills Launchpad brand has now expanded to include social media (Facebook, Twitter, Instagram and LinkedIn) and tailored local offers, such as Skills Launchpad Plymouth.



---

## Looking Forward

---

This document sets out a clear, priority-based approach to skills development within the Heart of the South West. Drawing upon the area's substantive evidence base, the plan sets out a shared agenda for skills delivery and prioritisation over the next period, looking to address those opportunities which may best deliver for both our economy and our residents, and better focus action around our greatest areas of skills need or challenge.

In bringing forward this plan however, skills and employment partners within the Heart of the South West are acutely aware of both the ongoing economic turbulence emerging from Covid-19 (and reciprocal recovery needs), additional pressures emerging from our departure from the EU, and wider opportunities / challenges emerging around our changing climate, aging demography and wider shifts in life and work linked to accelerating digital technologies and shifting social trends.



Looking ahead to a 10-year time horizon, partners believe that 5 core issues in particular will need explicit additional focus:

- o **Covid-19 Recovery.** Covid-19 has had a dramatic and disproportionate impact on the Heart of the South West skills ecosystem over the past 10 months, severely affecting the local economy given its reliance on tourism, leisure and accommodation, retail and manufacturing activity, as well as disrupting core provision within our universities, schools, colleges and wider training providers. Whilst partners are already undertaking action to address the immediate impacts of the pandemic for local people, it remains too early to say what the long-term impact of this disruption will ultimately be.
- o **Demographic Change.** The Heart of the South West is currently undergoing an ongoing period of demographic change, with a population that is aging roughly 30% faster than the national average. In 2019, the population aged over 65 was 6.1 higher than across the rest of the UK, and 3.3 lower below the age of 33, with the ratio of those in work to retired shifting from 1 in 4 to roughly 1 in 3 since 2004.
- o **Digital Transformation.** Digital transformation continues at pace across the HotSW, with data suggesting that recent Covid-19 related events may further accelerate. Shifts in retail, work structure and job types can already be clearly seen across the economy, with a steady five-year pattern of growth in digital industries and careers against a change in existing industrial structures in many sectors. This pattern is only likely to accelerate as further automation and integration of digital processes and approaches is felt across the wider economy, with both new opportunities around roles and types of work, but significant issues around a growing digital divide and skills challenges amongst young and old alike. With current predictions suggesting at least 33% of the economy may be vulnerable to automation over the next 25 years, the HotSW will have to adapt to keep pace with the wider UK.





- o **Climate Change and Greening of the Economy.** The 23 warmest years on record have occurred in the past 25 years within the South West, with the region experiencing 10% more rainfall per annum than it did in 1960, and 30 additional frost-free days. The case for transformation and action is therefore now continually building, with efforts and activity around greening of our economy accelerating daily. In 2019, Government committed itself to reducing UK emissions to zero by 2050, with an end to the sale of all new petrol and diesel vehicles by 2035. The economic implications of this shift in policy pose both significant new opportunities and risk around local employment, skills and labour market capacity. With investment and change needed across the energy sector, within agricultural, transport, business process and residential and construction services, with the potential creation of 60,000 to 100,000 new or transformed roles by 2040.
- o **Nature of Work.** The South West has, for a number of year, been undergoing a steady shift in the type and nature of work on offer, with a polarisation between lower value service sector and traditional manufacturing work, and higher value, often digitally based production and engineering and knowledge service activity. The recent events of Covid-19 have likely further accelerated this shift across multiple sectors, with individuals forced to work from home, with traditional sector disrupted and supply chains undermined. Whilst the impact is yet to be fully felt, it is unlikely that the nature and type of work that emerges post Covid-19 will be exactly that that was found before the events of 2020, with strengthened focus on digital skills, knowledge work and higher value outputs.





From a skills perspective, the challenge of the above is now to ensure that our approach and prioritisation can keep pace. To achieve this, the SAP will continue to take leadership around future skills deep dives and research as it moves forward, working closely with core groups like the HotSW Social Mobility Panel, local Climate Change Leadership groups, and wider business and social partner organisations to ensure that the areas response and capacity is shaped to meet the future skills needs of shared region and economy.

To have any chance of achieving this however, and the wider ambitions, strategies and objectives set out in this report, the area will need partners, business, colleges and universities, and wider stakeholders to play their part alongside the SAP over the next few years. This will include:

- Working together across the HotSW to align around the shared priorities set out in this report, ensuring that business demand, provider supply and public and private sector funding are all pulling in the same direction.
- Engaging and working with our business community to place them at the centre of future skills design, ensuring that inclusion and growth ambitions are both served through prioritising training and skills provision which meets economic demand.
- Working with our skills providers at all levels to ensure they are able to meet the ongoing shift towards business led/ demand led skills, and also their wider roles as anchor institutions, community leaders, businesses in their own right and key economic actors.
- Bringing together our shared intelligence of demand and supply to ensure that our investment is effective and both improves lives and fuels wider growth and prosperity.

With the support of all partners in the HotSW, and particularly those with an active interest in the skills and employment landscape, the area now has the potential to transform it forward path, reinforcing and accelerating growth for all, whilst closing the gaps amongst some of our most vulnerable communities and individuals.





## Heart of the South West Skills Launchpad

(part of Heart of the South West LEP)

[www.skillslaunchpad.org.uk](http://www.skillslaunchpad.org.uk)

[skillslaunchpad@devon.gov.uk](mailto:skillslaunchpad@devon.gov.uk)